

**1992**

**GUIDE TO  
INSTITUTE FOR THE STUDY OF LANGUAGES  
AND CULTURES OF ASIA AND AFRICA**

**TOKYO UNIVERSITY OF FOREIGN STUDIES**



## CONTENTS

Main Activities	1
Organization	2
Research Division Staff Members	3
Advisory Committee	4
Joint Research Projects	5
Visiting Fellows	11
Academic Co-operation Agreements	15
Overseas Field Research Projects	1
Overseas Programme for Tenured Research Fellows	17
Language and Culture Information Processing	18
Intensive Language Courses	19
Computer Room	20
Library	21
Phonetics Laboratory	22
Publications List	23

Published in 1992 by  
**Institute for the Study of Languages and Cultures of Asia and Africa,  
(ILCAA)**

**Tokyo University of Foreign Studies (Tokyo Gaikokugo Daigaku)**

ADDRESS: 4-51-21 Nishigahara, Kita-ku, Tokyo, 114, Japan

TELEPHONE: 03-3917-6111, 03-3910-9147

FACSIMILE: 03-3910-0613

CABLE ADDRESS: GENGOBUNKA TOKYO

In Chinese the Institute is known as

國立亞非語言文化研究所

Our address is:

(郵政編碼114)日本國東京都北區西原4-51-21

東京外國語大學內

國立亞非語言文化研究所

電話號碼:(03)3917-6111 傳真號碼:(03)3910-0613

## MAIN ACTIVITIES

The Institute for the Study of Languages and Cultures of Asia and Africa (ILCAA) is a national government research institution for the study of the languages and cultures of Asia and Africa. Since its foundation on April 1 1964, at the recommendation of the Science Council of Japan, it has been located on the campus of the Tokyo University of Foreign Studies with which it still remains affiliated. As the first inter-university institution to be designated in the humanities and social sciences, it still continues to promote multi-disciplinary research on languages, linguistics, cultural anthropology, sociology, ethnology, sociology and history of Asia and Africa by acting as the institutional home for projects, and publishing important research findings.

Main activities include:

- (1) the implementation and stimulation of research pertaining to the languages, linguistics, history, anthropology, and ethnology of Asia and Africa
- (2) the compilation and publication of dictionaries and grammars of Asian and African languages
- (3) the sponsorship of intensive courses in Asian and African languages for specialists
- (4) the promotion of research in hitherto unstudied languages
- (5) despatchment of scholars abroad for specialized research
- (6) liaison with similar research institutions within Japan and abroad

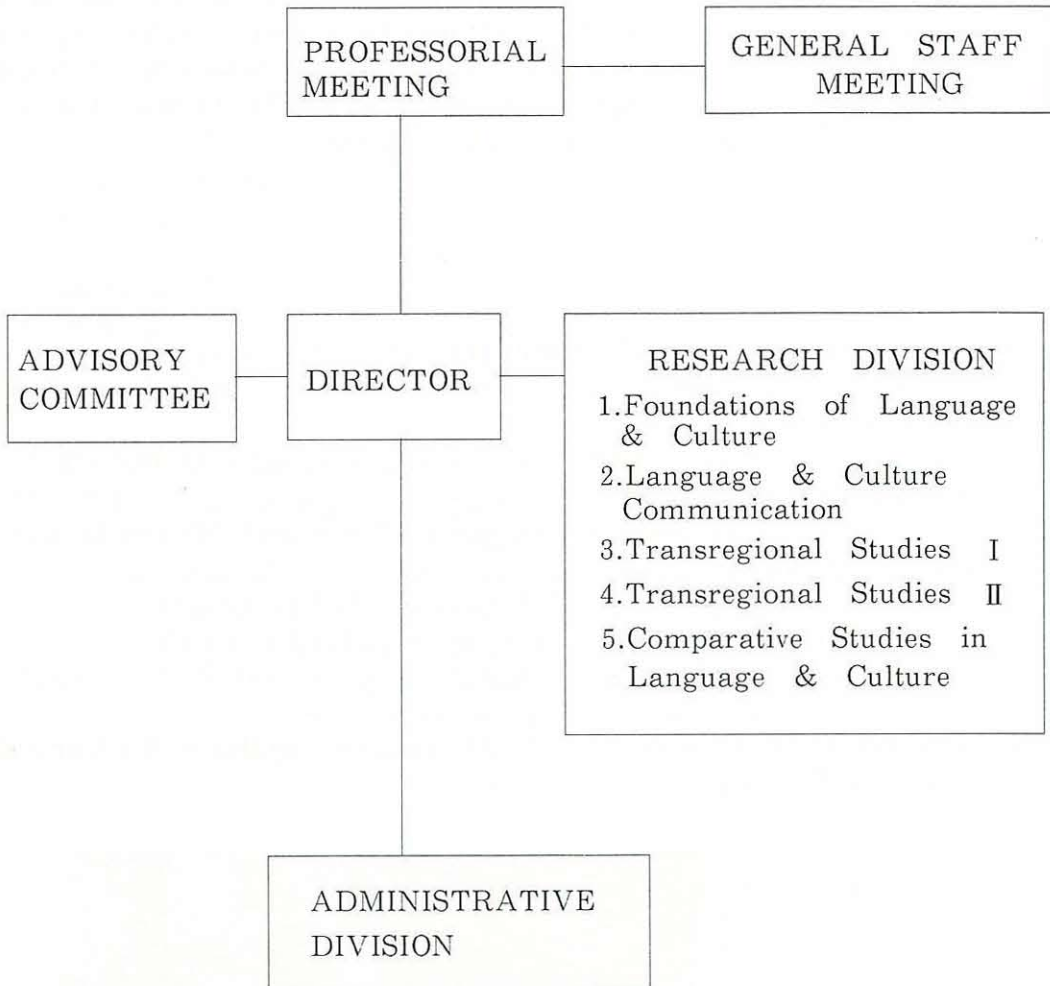
Some members of the staff teach Ph.D. students enrolled in the University graduate school programme.



Street tailors in Kinshasa, Zaire

(orig. photo: KAJI Shigeki, December, 1989)

## ORGANIZATION



## RESEARCH DIVISION STAFF MEMBERS

( as of april 1992)

### PROFESSORS

HINO Shun'ya	日野舜也	African Urban Society
IKEHATA Setsuho	池端雪浦	Philippine History
ISHII Hiroshi	石井 溥	South Asian Anthropology
KAMIOKA Koji	上岡弘二	Iranian Languages, Shiite Islam
KAWADA Junzo	川田順造	West African Cultures
MORINO Tsuneo	守野庸雄	Swahili Language
NAGATA Yuzo	永田雄三	History of the Ottoman Empire
NAKAJIMA Motoki	中嶋幹起	Languages in China
NAKAMURA Heiji	中村平治	Indian Politics & History
NAKANO Akio	中野暁雄	Afro-Asiatic Languages
NARA Tsuyoshi	奈良 毅	South Asian Languages
OKADA Hidehiro	岡田英弘	Asian History
OE Takao	大江孝男	Korean Language
SAKAMOTO Yasuyuki	坂本恭章	Austro-Asiatic Languages
UMEDA Hiroyuki	梅田博之	Korean Language
YAJIMA Hikoichi	家島彦一	Medieval Islamic Social & Economic History
YAMAGUCHI Masao	山口昌男	Semiotics of Culture

### ASSOCIATE PROFESSORS

DANIELS, Christian	唐 立	History of Chinese Technology, Ming/Qing
HANEDA Koichi	羽田亨一	Safavid Era Iranian History
HAYASI Tooru	林 徹	Turkic Languages
KAGAYA Ryohei	加賀谷良平	Acoustic Phonetics, Bantu&Khoisan Languages
KAJI Shigeki	梶 茂樹	Bantu Languages, Ethnolinguistics
MATSUMURA Kazuto	松村一登	Finno-Ugric Languages, General Linguistics
MATSUSHITA Shuji	松下周二	African Languages
MIZUSHIMA Tsukasa	水島 司	Indian Social & Economic History
MIYAZAKI Koji	宮崎恒二	Anthropology of Austronesian Societies
MORI Mikio	森 幹男	Comparative Study of Indochinese Cultures
NAITO Masao	内藤雅雄	Modern Indian History
NAKAMI Tatsuo	中見立夫	International Relations in East & Inner Asia
ODA Jun'ichi	小田淳一	Bibliometrics
SHINTANI Tadahiko, L.A.	新谷忠彦	Linguistics & Metaphysics
TAKASHIMA Jun	高島 淳	Computer-Aided Text Analysis, Hinduism

### TENURED RESEARCH FELLOWS

KURIHARA Hirohide	栗原浩英	Contemporary Vietnamese History
KUROKI Hidemitsu	黒木英充	Modern Middle Eastern History
MINEGISHI Makoto	峰岸真琴	Austro-Asiatic Languages
MIO Yuko	三尾裕子	East Asian Anthropology
NAKAZAWA Shin'ichi	中澤新一	Anthropology of Tibetan Buddhism
NEMOTO Kei	根本 敬	Modern Burmese History
NISHIO Tetsuo	西尾哲夫	Arabic Language & Culture
SHINMEN Yasushi	新免 康	Modern Central Asian History
TAKACHIO Hitoshi	高知尾仁	Symbolism & Representation of the World

In addition each year the Institute funds five visiting professors.

## ADVISORY COMMITTEE

(as of april 1992)

The Professoral Meeting, composed of professors and associate professors, administers the daily activities of the Institute. The advisory committee acts as an advisory body to the Director. It is composed of a few professors from the Institute, as well as prominent scholars and specialists from other institutions, thus representing the inter-university nature of the Institute. Members of the Advisory Committee for the 1991-1993 period are listed below in alphabetical order.

HONDA Minobu	Professor, Nagoya University of Commerce (Professor Emeritus, Kyoto University)
IKEDA Osamu	Professor, Osaka University of Foreign Studies
IKEHATA Setsuho	Institute Member
ISHII Yoneo	Professor, Sophia University (Professor Emeritus, Kyoto University)
ITANI Jun'ichiro	Professor, Kobe-Gakuin University (Professor Emeritus, Kyoto University)
KANDA Nobuo	Professor Emeritus, Meiji University
KAWADA Junzo	Institute Member
KITAMURA Hajime	Professor, Reitaku University (Professor Emeritus, Tokyo University of Foreign Studies)
KOGA Masanori	Professor, Hitotsubashi University
KOSHIMIZU Masaru	Professor, Tokyo University of Foreign Studies
MORI Masao	Chairman of the Board of Directors, The Middle Eastern Culture Center in Japan (Professor Emeritus, University of Tokyo)
NAGASHIMA Nobuhiro	Professor, Hitotsubashi University
NAKANE Chie	Professor Emeritus, University of Tokyo
NISHIDA Tatsuo	Professor, National Center for Science Information Systems (Professor Emeritus, Kyoto University)
OHJI Toshiaki	Professor, Kyoto University
OKOCHI Yasunori	Professor, Osaka University of Foreign Studies
SASAKI Komei	Professor, National Museum of Ethnology
SOFUE Takao	Professor, University of the Air (Professor Emeritus, National Museum of Ethnology)
SUZUKI Takeshi	Professor, Tokyo University of Foreign Studies
TANI Yutaka	Professor, Kyoto University
TSUCHIDA Shigeru	Professor, University of Tokyo
UMEDA Hiroyuki	Institute Member
WATABE Tadayo	Professor, University of the Air (Professor Emeritus, Kyoto University)
YAMAZAKI Toshio	Professor Emeritus, University of Tokyo
YANAIIHARA Katsu	Professor, Sakushin Gakuin University (Professor Emeritus, Keio University)

## JOINT RESEARCH PROJECTS

In addition to their individual research, members of the Institute organize long term projects in co-operation with scholars from outside. As of June 1992 we are hosting the following projects, which are listed according to sections within the research division.

### Foundations of Language & Culture

#### **A Comparative Study on the Modes of Interaction in Multi-Ethnic Societies**

(Coordinator: MIZUSHIMA Tsukasa)

This project aims to study comparatively the modes of interaction in multi-ethnic societies. Based on field studies conducted in Malaysia and other countries, it attempts to clarify the modes of interaction observed in the various types of encounters in the countries studied, and formulate a theory for understanding the nature of the socio-cultural changes that have occurred there. This project is of an inter-disciplinary nature, and is being conducted in co-operation with scholars from Malaysia and other countries.

#### **Reconsideration of the Concept "Primitiveness"**

(Coordinator: KAWADA Junzo)

The concept of "primitiveness", as contrasted to that of "civilization", has been of basic importance to ethnology and cultural anthropology. But little consideration has been given to the cultural and ideological background lying behind the formation of the concept, its contents and its use as a conceptual tool for research. This joint research project is conducted in a multi-disciplinary way with special importance attached to examination of the following points:

- 1) Contrast between "primitiveness" as one stage in culture-historical development, and "primitiveness" as related to an ideological "other world".
- 2) Relationship between the culture of technology and the culture of values.
- 3) Consideration of European cultures as well as Asian (including Japanese) cultures.

This project has been under way for five years with occasional publications.

#### **Regional Integration and Ethnicity**

(Coordinator: NAKAMURA Heiji)

Over the years, a series of world-wide transformations and upheavals have occurred which demand a re-structuring both of methodology and value-consciousness in the social sciences as a whole, and historical research in particular. It would be rather idle and "naive" to disregard these changes and stick to the same evaluation relating to such concepts as national sovereign, national state, federalism, local autonomy and so on. One of the basic issues is a new conceptualization of the Third Worldization of the First World, including Japan, by the study of large numbers of new immigrants to these areas.

The objective of this joint research project is to re-examine and make a systematic analysis of the above-mentioned "hot" and urgent problems within

the framework of regional integration and ethnicity by covering the main area of the world today through regional networks, such as EC, ASEAN and SAARC. A multi-disciplinary approach is adopted.

### **Symbolism and World View**

(Coordinator: MIYAZAKI Koji)

Specialists of diverse disciplines such as anthropology, folklore, history, literary theory and philosophy collaborate through shared interests in the semiotic analysis of culture.

Publications: *Performance in Culture*, Nos. 1-4.

*Studies on Symbolism and World View*, 2 vols.

### **Comprehensive Studies on Asian and African Languages**

(Coordinator: KAGAYA Ryohei)

This is a comprehensive joint project on modern Asian and African languages, which is designed to develop linguistic theories through an analysis of linguistic data collected in the field. It consists of three study groups, i. e. the phonology group, the syntax group and the lexicographical group. At each study meeting, data are discussed comparatively and / or contrastively from all sides by specialists of various Asian and African languages. The results are published annually by the Institute in a research report entitled, *Asian and African Linguistics*.

## **Language & Culture Communication**

### **Asian & African Languages Acquisition Programme**

(Coordinator: NAKAJIMA Motoki)

The committee which administers this programme aims to study the most effective methods for raising practical competence in Asian and African languages, and familiarizing scholars with their structures.

Our intensive language training courses aim;

- i) to impart students with powers of oral and written expression
- ii) to offer training in the scientific study of languages and the practical application of such studies
- iii) to assist students in acquiring tools for graduate school level field research

The committee chooses the languages to be studied, discusses such problems as teaching methods, time, facilities available and so forth.

Publications: Textbooks for Language Training, (31 languages) 147 vols, see p. 31

### **Research on CAI Programmes and Courses in Asian and African Languages Constructed by Hypertext-like Multimedia**

(Coordinator: OOE Takao)

This project aims at developing self-teaching courses for Asian and African languages, that are useful for students who want to work at supple-



mentary exercises in the intensive course held annually at our Institute, and for those who want to master a language to a certain degree of proficiency on their own initiative.

In 1992, the CAI programmes are concentrating on developing courses in Cantonese and Estonian. The research meetings take place twice a year, the first one in July and the second one in October. Problems to be discussed in the meetings include:

- 1) Effective programming of CAI courses; the selection of data for exercises and the most effective way of arranging them.
- 2) Research into the present condition of "multimedia systems", and the prospects for its use in language teaching.
- 3) How to draw up plans for new hardware and software systems, and prepare future research activities (i.e. new staff and expenditures for personnel and expendable items).

### **Compilation of Dictionaries**

(Coordinator: UMEDA Hiroyuki)

This project undertakes the machine-processing of Asian and African linguistic data for the compilation of dictionaries.

Publications: *Computational Analysis of Asian & African Languages*, Nos. 1-30, and *Lexicological studies*, Nos. 1-2.

### **Cross-cultural Studies of World Popular Music**

(Coordinator: KAJI Shigeki)

Modern popular music, or rock music if you like, enjoys popularity in Africa, Caribbean countries and South-East Asia, as well as Europe and America. Ethnomusicology encompasses the study of various types of music in the world, but until recently has focused mainly on traditional forms. This project, without losing sight of traditional backgrounds, tries to place modern Asian and African music in its present-day context. Research is conducted on an inter-disciplinary basis by musicologists, linguists, anthropologists and sociologists, and particular attention is devoted to the relationship with the contemporary expansion of urbanism the world over.

### **Basic Studies for Computer Processing of Linguistic and Cultural Data from Asia and Africa**

(Coordinator: NARA Tsuyoshi)

The purpose of this project is to compile comprehensive hypertexts by integrating audio-visual data obtained through field research into documentary information concerning the language, literature, history, geography, politics and economics of Asia and Africa in general, and South and West Asia in particular.

## Transregional Studies I

### Studies on South Asian Communities Overseas

(Coordinator: NAITO Masao)

The aim of this project is to describe the history of the migration and settlement of people of South Asian origin in particular countries like Kenya, Uganda, Tanzania, the UK and Canada. Attention is focused on community organizations, religion, castes, both inside and outside South Asia, which have and still are playing a pivotal role in migration and settlement of people hailing from South Asian countries. Another important subject for consideration is how the host societies responded to these newly formed South Asian communities, and also in what way people of South Asian origin have tried to accommodate themselves to their new environments after immigration.

### Social Change and International Relations in Modern East Asia

(Coordinator: NAKAMI Tatsuo)

During the last ten years access to archival sources relating to modern East Asia has become easier, and now historians face the problem of how to systematically collect and digest this huge body of materials. This project focuses on the utilization of archival sources for historical analyses in studies relating to social change and international relations in East Asia between the eighteenth century and twentieth centuries. Symposiums with guest speakers are held twice a year, and monographs and collections of source materials are to be published.

### Studies on Linguistic and Cultural Contacts

(Coordinator: NAKAJIMA Motoki)

This project addresses the question, What is China?, from the perspective of linguistics. China is not an ethnic and cultural monolith. It examines the languages of China such as Manchu, Mongolian, Chinese, Uighur, Bai and so forth, the peoples who speak them, their social and geographical circumstances, their cultural and historical backgrounds, the structures of their languages and writing systems, the range of their dialects and inter-relations with other languages.

### History and Languages of Asian Pastoral Nomads

(Coordinator: OKADA Hidehiro)

In constructing an integrated picture of Asian history, one of the most important components is the role played by the pastoral nomads, who spread themselves far and wide in Inner Asia. Its classification, however, has so far been hindered due to the limitation of available materials and the insufficient development of terminology and pertinent concepts. This project, enlisting the help of specialists in the history and languages of Manchus, Mongols, Turks, Tibetans, Persians, Arabs and so forth, aims to establish as unified historical view of them as possible. Symposiums are held twice a year.

## **Diffusion, Formation and Change of Socio-Cultural Legitimacy in South and South-East Asia**

(Coordinator: ISHII Hiroshi)

Cultures and societies of South and South-East Asia have been deeply influenced by Indian and/or Chinese civilization, which greatly transformed and reorganized indigenous systems. It has often been observed that societies and groups in these areas tried to make their culture and society legitimate by resorting to concepts originating in one, or sometimes both of the great traditions. In areas influenced by Indian civilization, the concept "dharma", pointing to the ideal condition of human beings and their society and culture, is important for understanding processes of this kind.

Bearing this concept in mind, this project intends to carry out comparative studies of various societies and cultures formed under the influence of Indian civilization. Main areas dealt with include the Himalayan region, Sri Lanka and South-East Asia. Analyses will be made in the spheres of political organization, urban structure, religion, iconology, social structure, everyday life and so forth. Due attention is paid to indigenous cultures as well.

## **Reformulation of South-East Asian History**

(Coordinator: IKEHATA Setsuho)

In the international sphere, studies on South-East Asian history have made remarkable progress in specific areas and subjects over the last two decades. However, only limited attention has been paid to the renovation of the methodology for integrating new research findings and interpretations of particular phenomenon into a general history of South-East Asia. This project aims to reformulate current methodology through joint research work by scholars from related disciplines such as archeology, history and international relations.

## **Cultural Dynamics between Han-Chinese and Surrounding Minority Groups**

(Coordinator: MIO Yuko)

This project aims to clarify the cultural dynamics between the Han-Chinese and surrounding minority groups in various parts of Asia. It is well known that minority groups, while striving to maintain their own traditional identities, largely absorbed the dominant Han-Chinese culture. However, this cultural interaction did not always go in one direction. It is also true that the cultures of minority groups influenced and helped shape Han-Chinese culture as we know it today. Using field data collected in various areas, including mainland China, Hong Kong, Taiwan and South-East Asia, this project attempts to explore the synchronic and diachronic interactions among Han-Chinese and minority groups, as well as to examine the nature of each groups culture.

## Transregional Studies II

### Comparative Studies on Urbanization in Africa

(Coordinator: HINO Shun'ya)

This project undertakes inter-disciplinary comparative studies of African urbanization related to the formation of African national societies, development of the social relations between urban and rural societies, function of lingua franca and so forth. This project has conducted cooperative field research since 1986.

### Research on the Mechanism of Cross-Cultural Contacts in the Islamic World

(Coordinator: YAJIMA Hikoichi)

The Islamic world is a centre of intensive urban activity, a melting pot, a crossroad, or meeting place, if you like, which covers an immense area in space and time; it has been organized as an integrated socio-cultural area throughout history, even though it contains diverse ecological, political, social and religious component parts. This project aims to explicate the mechanism of cross-cultural contacts and the relationships by which the entire Islamic world has been integrated into a unique organic synthesis.

This project operates by concentrating on a specific theme for a period of four to five years. During the period 1987-1991, the research topic was "Comparative Study of *Suq/Bazar* as viewed from the Mechanism of Cross-Cultural Contacts". From 1992 we have begun research on "Human Mobility and Communication in the Islamic World". The problem of migration in Muslim societies is especially important for this study because *hijra* (migration) and *hajj* (pilgrimage) are fundamental forms of political, cultural and social action! This research project will be conducted on a cross-disciplinary basis placing importance on the following points:

- 1) various features and aspects of human migration
- 2) the process of historical migration
- 3) relationships between problems arising from migration and cross-cultural contact, such as identity changes, adaptations and conflicts.

Publications: *Annual Project Report*, Nos. 1-2 and *Studia Culturae Islamicae*, Nos. V-44.



Mannequins reflect the age. Shop windows in the Middle East sometimes display relics of the good old days. One wonders whether young Turkish men still find "beauty spots" appealing.

(Orig. Photo: KAMIOKA Koji, January, 1991, Diyarbakor)

## VISITING FELLOWS

Each year scholars from abroad are invited to study at the Institute to promote research activities here and to encourage international academic co-operation in general. The names of past and present visiting fellows are listed below.

	Name-Country	Special Field	Period
1967	Gordon T. Bowles (U.S.A.)	Anthropology	Oct.1967–Sep.1968
1968	Muhammad Ahmad Anis (Egypt)	History of modern Egypt	Oct.–Dec.1968
1973	Raouf Abbas Hamid (Egypt)	Economic history of modern Egypt	Apr.–Sep.1973
	Yellava Subbarayalu (India)	History of South India	Oct.1973–Oct.1975
1975	Fe Aldave-Yap (Philippines)	Philippine languages	Sep.–Dec.1975
	Wanjin Kim (Korea)	Korean language	Aug.1975–Jul.1976
1976	Curtis D. McFarland (U.S.A.)	Austronesian linguistics	Feb.1976–Feb.1977
	Abd al-Rahim Abd al-Rahman Abd al-Rahim (Egypt)	Modern economic history of the Middle & Near East	Jun.–Oct.1976
	Salim Abdulla Wazir (Tanzania)	Pedagogics	Jun.–Oct.1976
	Bhakti Prasad Mallik (India)	Phonologic, semantic & socio-linguistics of modern Bengali	Jul.–Dec.1976
	Karthigesu Indrapala (Sri Lanka)	History of Sri Lanka and South India	Nov.1976–Mar.1977
1977	Chang Kyun Yu (Korea)	Korean language	Apr.1977–Jan.1978
	Søren C. Egerod (Denmark)	Oriental linguistics & classics	Sep.1977–May 1978
1978	Bozkurt Guvernc (Turkey)	Anthropology	May –Oct.1978
	Thubten Jigme Norbu (U.S.A.)	Tibetan language	Jun.1978–Mar.1979
	André-Georges Haudricourt (France)	Linguistics, ethnology, botany	Oct.–Oct.1978
	Maria Lourdes S. Bautista (Philippines)	Socio-linguistics	Oct.1978–May 1979
1979	William S. Y. Wang (U.S.A.)	Linguistics, phonetics, neurolinguistics	Feb. – Jul.1979
	Alhaji Faruk Gezawa (Nigeria)	Hausa language & linguistics	Apr.–Dec.1979
	Shyamsunder Joshi (India)	Hindi language & literature	May–Aug.1979
	Dor Bahadur Bista (Nepal)	Anthropology	May –Jun.1979
	Jean-Baptiste Bunkungu (Upper-Volta)	Mossi language	Jun.–Sep.1979

	Paul M. Thompson (U.K.)	Chinese philosophy & literature	Sep.1979–Sep.1980
	Curtis D. Mcfarland (U.S.A.)	Austronesian linguistics	Oct.1979–Sep.1980
	Chandra Mudaliar (India)	Political science	Oct.1979–Sep.1980
	Udom Warotamasikkhadit (Thailand)	Linguistics	Nov.–Nov.1979
1980	Thomas Sebeok (U.S.A.)	Linguistics, semantics	Apr.–Apr.1980
	Maoji Fu (China)	Linguistics, ethnology	Jun.1980–Mar.1981
	Samuel H. Elbert (U.S.A.)	Polynesian languages	Oct.1980–Jan.1981
	Kripal C. Yadav (India)	Indian history	Oct.1980–Sep.1981
	Bozkurt Güveng (Turkey)	Anthropology	Oct.1980–Sep.1981
	Alain Peyraube (France)	Chinese language & linguistics	Oct.–Dec.1980
1981	Jae Keuk Seo (Korea)	Korean language	May 1981–Mar.1982
	Muhammad B. Mkelle (Tanzania)	Swahili languages	Jun.–Dec.1981
	Maurice Coyaud (France)	Chinese linguistics	Jul.–Jul.1981
	William O. Beeman (U.S.A.)	Anthropology	Sep.1981–Aug.1982
	Marie-Claude Paris (France)	Chinese linguistics	Sep.–Oct.1981
	Talat Tekin (Turkey)	Turkic languages	Sep.1981–Jan.1982
	P. A. Narasimha Murthy (India)	International relations	Oct.1981–Nov.1982
	Yoshiro Imaeda (France)	Tibetan history & religion	Oct.1981–Jan.1982
	Ernesto Constantino (Philippines)	Isinay language	Nov.1981–Oct.1982
1982	Suresh Awasthi (India)	Indian theater	Feb.1982–Jan.1983
	Salah A. El-Araby (Egypt)	Audio-visual methods of teaching Arabic	Feb.1982–Jan.1983
	Kiruja Ruchiami (Kenya)	African affairs	May –May 1982
	Mohammadou Aliou (Cameroon)	Linguistics & Fula language	Jun.–Sep.1982
	John G. Hangin (U.S.A.)	Mongolian language	Sep.1982–Aug.1983
	Isidore Dyen (U.S.A.)	Austronesian languages	Aug.1982–Aug.1983
	Suriya Ratanakul (Thailand)	South-East Asian languages & linguistics	Aug.–Sep.1982
	Tuncer Baykara (Turkey)	History	Oct.1982–Jan.1983
1983	Kanchana Ngourngsi (Thailand)	Linguistics	Jan.–Jan.1983
	Elmar A. Holenstein (Switzerland)	Philosophical anthropology	Mar.1983–Feb.1984
	Dor Bahadur Bista (Nepal)	Anthropology	May 1983–May 1984
	Nam Pung-Hyun (Korea)	Korean language	Aug.1983–Aug.1984
	Alexis Rygaloff (France)	Chinese linguistics	Oct.1983–Sep.1984
	Adel Abdulsalam (Syria)	Geography, Circassian language	Oct.1983–Oct.1984
	Sechin Jagchid (U.S.A.)	Mongolian history	Sep.1983–Aug.1984
	Santasilan Kadirgamar (Sri Lanka)	Modern history, international relations	Nov.1983–Aug.1984

1984	Lilia F. Antonio (Philippines)	Pilipino, Philippine literature	Mar.-Sep.1984
	Rajagopalan Venkataratnam (India)	Medical sociology	Jun.1984-Jun.1985
	Dattatreya N. Dhanagare (India)	Sociology	Sep.-Dec.1984
	Pahk Hy-Tay (Korea)	Japanese linguistics	Sep.1984-Aug.1985
	Ram Adhar Singh (India)	Linguistics	Oct.1984-Sep.1985
	Barbara N. Aziz (U.S.A.)	Social anthropology	Oct.1984-Oct.1985
	Guillermo E. Quartucci (Argentina)	Japanese literature	Nov.1984-Sep.1985
1985	Huang Gouying (China)	Linguistics	Feb.-Dec.1985
	Bhakti Prasad Mallik (India)	Phonologic, semantic & socio-linguistic studies of modern Bengali	Sep.1985-Sep.1986
	Pradyumna P. Karan (U.S.A.)	Geography	Oct.1985-Sep.1986
	Ma Zhen (China)	Chinese linguistics	Oct.1985-Sep.1986
1986	Metin And (Turkey)	Ethnography	Mar.-May 1986
	Han Mie Kyung (Korea)	Japanese linguistics	Apr.1986-Jan.1987
	Daw Mya Mya (Burma)	History	Oct.1985-May 1986
	Shanmugam P. Subbiah (India)	Geography	Aug.1986-Apr.1987
	James F. Downs (U.S.A.)	Anthropology	Oct.1986-Sep.1987
	Ahmet M. Tuncoku (Turkey)	International relations	Oct.1986-Sep.1987
	Li Rong (China)	Chinese linguistics	Dec.1986-Sep.1987
1987	He Wei (China)	Chinese linguistics	Mar.-Aug.1987
	Kyaw Win (Burma)	History	Jun.1987-Jun.1988
	Raouf Abbas Hamid (Egypt)	Economic history of modern Egypt	Jul. - Sep.1987
	Vigilio G. Enriquez (Philippines)	Social Psychology	Oct.1987-Sep.1988
	Saroj K. Chaudhuri (India)	Japanese language & Culture	Oct.1987-Sep.1988
	John H. Fincher (U.S.A.)	Modern Chinese History	Oct.1987-Sep.1988
1988	Urmila Phadnis (India)	International relations	May 1988-Jul.1989
	Tubxin (China)	History	Oct.1988-Sep.1989
	Hou Jing-yi (China)	Chinese linguistics	Oct.1988-Sep.1989
	Nasrin F. Hakami (Iran)	Sociology	Oct.1988-Sep.1989
1989	Lilia F. Antonio (Philippines)	Pilipino, Philippine literature	Jul.1989-Mar.1990
	Raouf Abbas Hamid (Egypt)	Economic history of modern Egypt	Oct.1989-Sep.1990
	Junast (China)	Mongolian linguistics	Oct.1989-Sep.1990
	Im Hong-pin (Korea)	Korean linguistics	Oct.1989-Sep.1990
	Hu Tan (China)	Sino-Tibetan linguistics	Nov.1989-Sep.1990
	Wang Zhonghan (China)	History	Nov.-Dec.1989
	Frank M. Heidemann (W.Germany)	Ethnology & sociology	Nov.1989-Nov.1990

1990	Zhang Xing-quan (China)	Linguistics	Sep.1990–Sep.1991
	Seong Baeg-in (Korea)	Manchu linguistics	Oct.1990–Sep.1991
	Mohammad-Reza Nasiri (Iran)	History	Oct.1990–Sep.1991
	Nai Pan Hla (Myanmar)	Mon language	Dec.1990–Sep.1991
1991	Jerry Norman (U.S.A.)	Chinese linguistics	Mar.–Aug.1991
	Patrizia Violi (Italy)	Semiotics	Mar.–May 1991
	Nasrin F. Hakami (Iran)	Sociology	May–Sep.1991
	Toomas Help (Estonia)	Estonian linguistics	Jun.1991–May 1992
	Talat Tekin (Turkey)	Turkic languages	Jun.–Sep.1991
	David P.B. Massamba (Tanzania)	Swahili linguistics	May.–Aug.1991
	Lawrence A. Reid (U.S.A.)	Austronesian and Austro-Asiatic linguistics	Oct.1991–Sep.1992
	Hans-Peter Vietze (Germany)	Mongolian linguistics	Oct.1991–Sep.1992
	André Wufela Yaek'olingo (Zaire)	Oral literature	Oct.1991–Sep.1992
	Bando B. Rajapurohit (India)	Linguistics & phonetics	Oct.1991–Sep.1992
	Gong Hwang-Cherng (Taiwan)	Tangut language	Oct.1991–Sep.1992
	Gregory O. Nwoye (Nigeria)	Linguistics	Oct.1991–Sep.1992
	Ungku Maimunah Mohd. Tahir (Malaysia)	Literature	Nov.–Dec.1991
1992	Aregay W. Merid (Ethiopia)	History	Apr.–Jun.1992
	Mücteba Ilgürel (Turkey)	History	Jul.–Oct.1992
	Pradyumna P. Karan (U.S.A.)	Geography	Oct.1992–Sep.1993
	Ruth M. Basha (Tanzania)	Linguistics	Oct.1992–Sep.1993
	Lin Mei-rong (Taiwan)	Anthropology	Oct.1992–Sep.1993
	André Coupez (Belgium)	Linguistics/Oral literature	Oct.1992–Sep.1993
	Bira Shagdaryn (Mongolia)	Mongolian history	Oct.1992–Sep.1993



A Yu-Mien Yao woman pounding maize with a treadle-operated tilt-hammer pestle at Gulu Cun, Lina Cun Gongsuo, Dongpo Yaozu Xiang, Funing County, Yunnan, China.(雲南省富寧縣洞坡瑤族鄉里那村公所谷魯村) Orig.Photo: SHINTANI Tadahiko, 11 September 1991.)





## ACADEMIC CO-OPERATION AGREEMENTS

Since 1978 the Institute has signed agreements with overseas institutes for the purpose of promoting the mutual exchange of materials, information and researchers. At present the Institute has agreements with the following overseas institutes:

- (1) L'Office National de la Recherche Scientifique et Technique (now Ministère de l'Enseignement Supérieur de l'Information et de la Recherche Scientifique [M. E. S. I. R. E. S.]), Cameroon, 1978.
- (2) Central Institute of Indian Languages, Ministry of Education, Mysore India (CIIL), 1987.
- (3) Indian Statistical Institute, Calcutta, India (ISI), 1987.
- (4) Langues et Cultures de l'Aire Tibétaine, CNRS, Paris, France (LCAT), 1988.
- (5) L'Institut des Sciences Humaines, Mali (ISH), 1990.



Two young monks learning the Tai Lue script in the precincts of a village temple, near Meng Hun, Xishuang Banna, Southern Yunnan, China. (雲南省西雙版納州勐海縣勐混鄉) With the revival of Theravada Buddhism in Xishuang Banna since the 1980s, most Tai villages have rebuilt the temples demolished during the turmoil of the Cultural revolution, and young boys are entering the temples for religious training again. (Orig. Photo: Christian Daniels, 31 December, 1991)

## OVERSEAS FIELD RESEARCH PROJECTS

The Institute regularly organises long term field research projects, including both Japanese and non-Japanese participants, which are conducted in Asian and African countries. Past projects and those under way at present are listed below:

- 1) Comparative Study of Islamic Basic Cultures in the Socio-Cultural Link between the Arabian Sea and the Eastern Mediterranean  
1983, 1984 (Project Leader MIKI Wataru), 1986 (Project Leader KAMIOKA Koji).
- 2) Investigation and Analysis of Bantu Languages and their Comparative Study  
1984, 1985, 1987 (Project Leader YUKAWA Yasutoshi)
- 3) Multidisciplinary Research on the Societies of the Niger Bend  
1986, 1988, 1990, 1992 (Project Leader KAWADA Junzo)
- 4) Comparative Research Urbanization in Africa  
1986, 1987 (Project Leader HINO Shun'ya)
- 5) Studies of South Asian Languages and Feeding Research Data into Computational Data Bases  
1987, 1988, 1989 (Project Leader NARA Tsuyoshi)
- 6) Comparative Research on Urbanization in Africa; with special reference to the formation of regional and national societies  
1989, 1990, 1991 (Project Leader HINO Shun'ya)
- 7) Comparative Studies of Traditional Market (*suq/bazar/sarsi*) Networks in Islamic Countries  
1989, 1990 (Project Leader KAMIOKA Koji), 1991 (Project Leader NAGATA Yuzo)
- 8) Descriptive and Comparative Studies of Bantu and Some Adjacent Languages  
1989 (Project Leader YUKAWA Yasutoshi), 1990 (Project Leader KAGAYA Ryohei)
- 9) Studies of Linguistic Contacts and Socio-cultural Changes in Borderland China  
1990, 1991, 1992 (Project Leader NAKAJIMA Motoki)
- 10) Computer-Assisted Studies of South Asian Languages  
1991, 1992 (Project Leader NARA Tsuyoshi)
- 11) Modes of Social Integration in a Multiethnic Nation; A Case Study of Malaysia  
1991, 1992 (Project Leader MIYAZAKI Koji)

## OVERSEAS PROGRAMME FOR TENURED RESEARCH FELLOWS

The Institute despatches tenured research fellows overseas for a period of two years for the purpose of developing their language skills and conducting research in their relevant areas of study.

1967-1969	ISHIGAKI Yukio MORINO Tsuneo	Ethiopia, Italy, Kenya, Somalia, Sudan Kenya, Tanzania, Uganda, Zambia
1969-1971	MATSUSHITA Shuji YAJIMA Hikoichi	Cameroons, Chad, Iran, Niger, Nigeria Egypt, Iraq, Lebanon, Syria, Turkey
1971-1973	NAITO Masao NAKANO Akio	India, Sri Lanka Egypt, Ethiopia, Morocco, South Yemen
1973-1975	FUKUI Katsuyoshi NAKAJIMA Motoki	Egypt, Somalia, Tanzania, Kenya Hong Kong, Malayasia, Singapore
1975-1977	KAGAYA Ryohei YUKAWA Yasutoshi	Botswana, Lesotho, Swaziland, Tanzania, Zambia Cameroons, Kenya, Tanzania, Zaire, Zambia
1977-1979	ISHII Hiroshi YABU Shiro	India, Nepal Burma, Thailand
1979-1981	HANEDA Koichi	Afghanistan, Iran, Turkey
1981-1983	SHINTANI Tadahiko YAMAMOTO Yuji	Australia, New Caledonia, Fiji, Vanuatu Thailand, Nepal, India, Sri Lanka
1983-1985	TSUJI Nobuhisa MIZUSHIMA Tsukasa	China, Hong Kong, Taiwan India, Malaysia, Singapore, England
1985-1987	NAKAMI Tatsuo KAJI Shigeki	China, Mongolia Zaire, Kenya
1987-1989	MATSUMURA Kazuto MIYAZAKI Koji	Finland, The Soviet Union The Netherlands, Indonesia
1989-1991	HAYASI Tooru KURIMOTO Eisei	China, Turkey Ethiopia, Kenya
1991-1993	KURIHARA Hirohide MINEGISHI Makoto	Vietnam, Russia India



## INTENSIVE LANGUAGE COURSES

Courses in the following Asian and African languages have been offered since 1965. Members of the Institute teach the courses with assistance from native speakers.

	(at Tokyo)	(at Osaka)
1965	--	Thai
1967	Korean	--
1968	Bengali	--
1970	Amharic, Hebrew	--
1971	--	Burmese
1972	Fukienese	--
1973	Tibetan	--
1974	Korean, Tibetan	--
1975	Cambodian, Bengali	--
1976	Persian, Swahili	Burmese
1977	Cantonese, Marathi	Mongolian
1978	Thai, Turkish	Persian
1979	Hausa, Burmese	Thai
1980	Nepali, Mongolian	Vietnamese
1981	Pashto, Hindi	Standard Chinese
1982	Hungarian, Egyptian Arabic	Fulfulde
1983	Finnish, Tibetan	Punjabi
1984	Pilipino, Yoruba	Turkish
1985	Korean, Khmer	Swahili
1986	South-Western Mandarin, Tamil	Bengali
1987	Central Mandarin, Thai	Singhalese
1988	Turkish, Persian	Indonesian
1989	Bengali, Vietnamese	Egyptian Arabic
1990	Korean, Indonesian	Persian
1991	Estonian, Burmese	Standard Chinese
1992	Egyptian Colloquial Arabic, Nepali	Pilipino

About ten students are selected from applicants nationwide for each course, which runs for six weeks. At the finish, the Director of the Institute issues students with a certificate which certifies that they have completed the course.

## COMPUTER ROOM

The Computer room of the Institute has housed a HITAC M-640/20 system since March 1989. This computer system consists of a 32 MB memory, three disks of a total 15 GB, four optical disk units and three magnetic tape-decks. TSS terminals can be used for inputting and three LASER-BEAM printers for outputting.

Software has been developed which adapts these printers for printing the scripts of Asian and African languages in all their various shapes and sizes. Also installed is a word-usage retrieval system, which is specially designed to operate on Asian and African languages in their original scripts without the need to convert them into the Latin alphabet or numerical forms. In other words, the system not only accepts the data in its original scripts, but can also print out word-usages retrieved from chosen corpora in their original scripts as well. This system is suitable for linguistic research as well as for application in such fields as history and anthropology (see p. 18). Five graphic display terminals are also available, and future plans include the automatization of teaching Asian and African languages, in the form of a Computer Assisted Instruction system.

In 1993, this system will be replaced by a superior system linked to the UNIX sub-system. Furthermore, Local Area Network which covers the entire Institute will be realized; Institute members will be able to tap into any system from their own personal computers, which will be connected to the main-frame and sub-system. New application softwares such as a relational data base system and several programming language processors, and so forth, will add to the usefulness for different types of extensive research.



## LIBRARY

In order to facilitate inter-university joint research, the Institute library has been making every effort since its establishment in 1964 to collect materials and basic data indispensable for the study and research of languages and cultures of Asia and Africa. As of March 1992, library holdings totalled 71,709 volumes and 6,261 reels of microfilm, in addition to research reports and dissertations from the numerous overseas academic institutions with which the Institute has mutual exchange agreements.

The library holds about 1,600 periodicals and 22 current newspapers, besides a collection of national language textbooks published in Asian and African countries during the 1960s, a collection of Bibles written in different languages of the world, and full back number collections (including microfilm copies) of relevant academic journals published throughout the world. These include back numbers of the monthly Bengali literary journals published during the 19th-20th centuries, such as *Bharati*, *Pantha*, *Sahitya*, *Janmabhum*, *Bamabodhini Patrika*, and 65 Iranian newspapers issued from the late 19th century to 1970, as well as a complete set of the *Takvim-i Vekayi*, 1831-1922 (Gazette of the Ottoman Empire) and *Resmi, Gazete*, 1921-1983 (Gazette of the Republic of Turkey).

Holdings also include 1,950 Burmese books donated by the University of Yangon, and many other source materials written in the native languages of Asia, Africa, Europe, Russia and the Pacific region.

Another characteristic of the library is the personal collection of four prominent Japanese linguists and historians.

(1) Yamamoto Collection (acquired in 1967)

Collection of the late Professor YAMAMOTO Kengo (1920-65) of Atomi Gakuen College. It contains a large number of books on Manchurian and Tungus, concerning the fields of linguistics, phonetics and Altaic studies (totalling 598 volumes in Japanese and European languages).

(2) Asai Collection (acquired in 1970)

Academic works and dictionaries of Asian and African languages (totalling 191 volumes in Japanese and European languages and 18 sheets of manuscript) collected by the late Dr. ASAI Erin (1895-1969), a renowned scholar of Austronesian studies. It includes valuable materials on the languages of Formosan ethnic groups.

(3) Kobayashi Collection (acquired in 1977)

Personal collection of Professor KOBAYASHI Takashiro (1905-87), a famous scholar of Mongolian history, formerly of Yokohama National University. It consists of 1,671 volumes in Japanese and European languages, covering the life and customs of the Mongolian people.

(4) Maejima Collection (acquired in 1985)

This collection consists of 1,272 books written in Japanese and Chinese, which the late Professor MAEJIMA Shinji (1903-83), one of the pioneers of Islamic studies in Japan, collected for the study of Oriental history and East-West cultural relations.

## PHONETICS LABORATORY

"I'd like to check the fundamental frequency of Yoruba speech..."

"Could you supply me with a visual display of pitch rise and fall in Cantonese?"

"I'd like to get some good recordings for use as teaching material..."

"What language is Fulani? Do you have any actual recorded examples? "

These requests reflect just a small part of the work undertaken by the Phonetics Laboratory. Various types of machines for speech analyses are employed in the study of phonetic materials collected in field studies.

In order to record and examine characteristics and articulation of speech sound, the following machines for analyses are available: sound-spectrograph, pitch extractor, photocorder and electropalatograph. The sound-spectrograph makes a frequency analysis of speech wave, extracts components of the speech wave at a certain time, and shows them as a certain pattern in black and grey color on special paper. This special patterned paper is called sound-spectrogram. The sound-spectrogram is obtained either with the wide-band or narrow-band in this machine. The wide-band sound-spectrogram mainly shows the length and quality of each speech sound, while the narrow-band sound-spectrogram shows the height of fundamental frequency and its height change, as well as its length. In this way it is possible to some extent to visualize a sound, which is unknown and difficult to express, in certain physical dimensions and to help infer articulation of that sound. The pitch extractor analyzes the fundamental frequency and the degree of sound strength, and displays the result on the screen. The result is also obtained in written form on special paper. This machine enables us to analyze short sentences, as well as single words, with a maximum process time of nine seconds. For a long-running speech, a photocorder is used with the pitch extractor. It is also used to directly display speech waves in order to observe speech data in detail. The electropalatograph is one of the devices for observing directly and recording the articulatory movement of the tongue. The artificial palate, which is embedded with 32 small electrodes, is attached to the speaker's hard palate. The 32 small lamps on the front surface of the machine indicate, by going on and off, how the tongue contacts with the electrodes at each point of time. The result is also recorded on special paper .

In addition, there is a tape duplicator for copying open-reel and cassette tapes, which have been compiled for teaching purposes, or which have been recorded in field studies. This machine can copy five tapes at a time. There are also various types of tape recorders and a sound-proof room for recording.

The Speech and Language Library attached to the Phonetics Laboratory, holds various important recorded materials, language, folk tales and folk music obtained in field studies. Recorded discs and tapes of the various languages in the world are available for loan.



## PUBLICATIONS LIST (as of april 1992)

From the outset, the Institute has published the latest results of current research on the languages, cultures and history of Asia and Africa. ILCAA publications included in the following list are forwarded to research institutions on an exchange basis, but none are available for sale.

Individual researchers may obtain complimentary copies by writing to the editing and publishing committee, or the author. (\*out of stock)

**Journal of Asian and African Studies**, Nos. 1-43. The Journal of the Institute issued bi-annually in Japanese, English, French and German.

**Newsletter**, Nos. 1-75. Issued in Japanese three times a year .

### Study of Languages and Cultures of Asia and Africa Monograph Series

1. ANUMAN Rajadhon, Phya: *The Life of the Farmer in Thailand*, 1967 (tr. from Thai into Japanese by KAWABE Toshio ).
- \*2. Ibn Fadlān: *The Risāla of Ibn Fadlān* (tr. from Arabic into Japanese by YAJIMA Hikoichi), 1969.
3. MATSUSHITA Shuji: *An Outline of Gwandara Phonemics and Gwandara-English Vocabulary*, 1972 .
4. NAKANO Akio: *Conversational Texts in Eastern Neo-Aramaic (Gzira dialect)*, 1973.
- \*5. TSUCHIDA Shigeru: *Reconstruction of Proto-Tsouic Phonology*, 1976.
- \*6. NAGATA Yuzo: *Muhsin-zāde Mehmed Paşa ve Âyânlık Müessesesi*, 1976.
- \*7. YAJIMA Hikoichi: *A Chronicle of the Rasūlid Dynasty of Yemen. Arabic Text, Notes, and Indices*, 1976.
8. MCFARLAND, Curtis D.: *A Provisional Classification of Tagalog Verbs*, 1977.
9. MCFARLAND, Curtis D.: *Northern Philippine Linguistic Geography*, 1977.
10. HASHIMOTO Mantaro J.: *Phonology of Ancient Chinese*, Vol. 1, 1978.
11. HASHIMOTO Mantaro J.: *Phonology of Ancient Chinese*, Vol. 2, 1979.
12. KAWADA Junzo: *Genèse et évolution du système politique des Mosi méridionaux (Haute Volta)*, 1979.
13. BAUTISTA, Maria L.: *Patterns of Speaking in Pilipino Radio Dramas; A Socio-linguistic Analysis*, 1980.
14. ISHII Hiroshi: *Social Structure and Its Change in a Newar Village; Social Change in a Caste Society*, 1980.
15. MCFARLAND, Curtis D.: *A Linguistic Atlas of the Philippines*, 1980.
16. YADAV, Kripal C.: *Elections in Panjab; 1920-1947*, 1981.
17. EL-ARABY, Salah A.: *Teaching Foreign Languages to Arab Learners-Methods and Media*, 1983.
18. KAWADA Junzo: *Textes historiques oraux des Mosi méridionaux (Burkina-Faso)*, 1985.
- \*19. MIZUSHIMA Tsukasa: *Nattar and the Socio-Economic Change in South India in the 18th - 19th Centuries*, 1986.
20. NAKAJIMA Motoki: *Report on Xiang Dialects*, Part 1, 1987 (in Japanese & Chinese).
21. TUNCOKU, Ahmet M.: *Japonya'mn için Halk Cumhuriyeti'ne Karşı Politikası (1952-1978)*, 1987.
22. BALLARD, William L.: *The History and Development of Tonal Systems and Tone Alternations in South China*, 1988.
23. ENRIQUEZ, V.G.: *Indigenous Psychology and National Consciousness*, 1989
24. NAKAJIMA Motoki: *Report on Xiang Dialects*, Part 2, 1990 (in Japanese & Chinese).
25. HARA Tadahiko: *Paribar and Kinship in a Moslem Rural Village in East Pakistan*, 1991.
26. NASIRI, Mohammed Reza: *Nāsireddin Şah Zamanında Osmanlı-İran Münasebetleri (1848-1896)*, 1991.

## A Linguistic Questionnaire for Asian and African Languages

Two volumes, 1966-67 (in Japanese, English, French, Arabic, Chinese, German, Hindi, Indonesian, Persian, Russian, Spanish and Swahili).

### Asian and African Lexicon

1. YAMAMOTO Kengo: *A Classified Dictionary of Spoken Manchu, with Manchu, English and Japanese Indexes*, 1969.
- \*2. UMEDA Hiroyuki: *A Classified Dictionary of Modern Korean, with Korean, English and Japanese Indexes*, 1971.
- \*3. HASHIMOTO Mantaro J.: *Basic Vocabulary of Three Hakka Dialects*, 1972, & a supplementary volume entitled *A Quadruple Index to the Basic Vocabulary of Three Hakka Dialects*, 1973.
4. WADA Shohei: *Iraqw Basic Vocabulary, with Swahili Equivalent, with Iraqw, Swahili, English and Japanese Indexes*, 1973.
5. ISIGAKI Yukio: *A Basic Clause Dictionary, Book 1: Geez-Tigrinya-Āmharic-Somali-Swahili*, 1974 (in English).
6. MORINO Tsuneo: *A Classified Dictionary of Swahili, with Swahili, English and Japanese Indexes*, 1975.
7. SAKAMOTO Yasuyuki: *Mon Vocabulary*, 1976.
8. NAKAJIMA Motoki: *A Study of the Basic Vocabulary of the Min Dialect in the Tung Shan Island, with an English Index*, & a supplementary volume entitled *Japanese index*, 1977.
9. NARA Tsuyoshi: *Avahattha and Comparative Vocabulary of New Indo-Aryan Languages*, 1979.
10. NAKAJIMA Motoki: *A Comparative Lexicon of Fukien Dialects*, 1979.
11. HASHIMOTO Mantaro J.: *The Be Language; A Classified Lexicon of Its Limkow Dialect*, 1980.
12. SHINTANI Tadahiko L.A.: *Tu' Vu'ng Êdê-Viêt-nhât (Rhade-Vietnamese-Japanese Glossary)*, 1981.
13. YABU Shiro: *A Classified Dictionary of the Atsi or Zaiwa Language (Sadon Dialect), with Atsi, Japanese and English Indexes*, 1982.
14. NAKAJIMA Motoki: *The Southern Chekiang Dialect; A Linguistic Study of Its Phonology and Lexicon*, 1983.
15. YUKAWA Yasutoshi: *A Classified Dictionary of the Sambia Language*, 1984.
16. KAJI Shigeki: *Lexique Tembo I; Tembo-Swahili du Zaïre-Japonais-Français*, 1986.
17. TSUJI Nobuhisa: *Lexicon of a Chinese Dialect in South Hunan, China; Classified Data from Longtan-xu, Jiahe County*, 1987.
18. HASHIMOTO Mantaro J.: *The Naxi Language Materials; Field Data Collected by the Late Prof. M.J. Hashimoto*, 1988.
19. NAKAJIMA Motoki: *The Shandong Dialects in Changyi & Fei Counties*, 1989.
20. SHINTANI Tadahiko L. A. & YANG Zhao: *The Mun Language of Hainan Island; Its Classified Lexicon*, 1990.
21. MORINO Tsuneo & NAKAJIMA Hisashi: *A Dictionary of the Swahili Language, Vol.1*, 1990.
22. MATSUSHITA Shuji: *The Sokoto Hausa*, 1991.
23. MORINO Tsuneo & NAKAJIMA Hisashi: *A Dictionary of the Swahili Language, Vol.2*, 1991.
24. KAJI Shigeki: *Vocabulaire Hunde*, 1992.

### Bantu Linguistics (ILCAA)

1. *Studies in Zambian Languages*, 1987.
2. *Studies in Tanzanian Languages*, 1989.
3. *Studies in Cameroonian and Zairean Languages*, 1992.

### Bantu Vocabulary Series (in English):

1. YUKAWA Yasutoshi: *A Classified Vocabulary of the Mwenyi Language*, 1987.
2. YUKAWA Yasutoshi: *A Classified Vocabulary of the Nkoya Language*, 1987.
3. KAGAYA Ryohei: *A Classified Vocabulary of the Lungu Language*, 1987.

4. KAGAYA Ryohei: *A Classified Vocabulary of the Lenje Language*, 1987.
5. YUKAWA Yasutoshi: *A Classified Vocabulary of the Nilamba Language*, 1989.
6. KAGAYA Ryohei: *A Classified Vocabulary of the Pare Language*, 1989.
7. YUKAWA Yasutoshi: *A Classified Vocabulary of the Luba Language*, 1992.
8. KAGAYA Ryohei: *A Classified Vocabulary of the Bakueri Language*, 1992.
9. NAKAGAWA Hiroshi: *A Classified Vocabulary of the Ha Language*, 1992.

### **African Languages and Ethnography**

1. EGUCHI Paul Kazuhisa: *Miscellany of Maroua Fulfulde (Northern Cameroun)*, 1974.
2. MATSUSHITA Shuji: *A Comparative Vocabulary of Gwandara Dialects*, 1975.
3. MOHAMMADOU, Eldridge: *L'Histoire des Peuls Férô6é du Diamaré; Maroua et Pétté*, 1976.
4. EGUCHI Paul Kazuhisa (tr.): *Poem of Repentance*, 1976.
5. WADA Shohei: *Hadithi za Mapokeo ya Wairaqw (Iraqw Folktales in Tanzania)*, 1976.
6. NAKANO Akio: *Dialogues in Moroccan Shilha (Dialects of Anti-Atlas and Ait-Warain)*, 1976.
7. TANAKA Jiro: *A San Vocabulary of the Central Kalahari-G//ana and G/wi Dialects*, 1978.
8. MOHAMMADOU, Eldridge: *Les Royaumes Foul6é du Plateau de l'Adamaoua au XIX<sup>e</sup> siècle*, 1978.
9. MATSUSHITA Shuji: *In a Small Town on the Benue – Fula Texts from Gongola State, Northern Nigeria*, 1978.
10. HINO Shun'ya: *The Classified Vocabulary of the Mbun Language in Mbang Mboum; with Ethnographical Descriptions*, 1978.
11. EGUCHI Paul Kazuhisa: *Fulfulde Tales of North Cameroon I*, 1978.
12. MOHAMMADOU, Eldridge: *Catalogue des Archives Coloniales Allemandes du Cameroun*, 1978.
13. EGUCHI Paul Kazuhisa: *Fulfulde Tales of North Cameroon II*, 1980.
14. MOHAMMADOU, Eldridge: *Le Royaume du Wandala ou Mandara au XIX<sup>e</sup> siècle*. 1982.
15. EGUCHI Paul Kazuhisa: *Fulfulde Tales of North Cameroon III*. 1982.
16. NAKANO Akio: *A Vocabulary of Beni Amer Dialect of Tigré*, 1982.
17. MOHAMMADOU, Eldridge: *Peuples et Royaumes du Foubina*, 1983.
18. EGUCHI Paul Kazuhisa: *Fulfulde Tales of North Cameroon IV*, 1984.
19. KAJI Shigeki: *Deux Mille Phrases de Swahili Tel Qu'il Se Parle au Zaïre*, 1985.
20. MOHAMMADOU Eldridge: *Traditions d'Origine des Peuples du Centre et de L'ouest du Cameroun*, 1986.
21. EGUCHI Paul Kazuhisa: *An English-Fulfulde Dictionary*, 1986.
22. MOHAMMADOU, Eldridge: *Lamidats du Diamaré et du Mayo – Louti au XIX<sup>e</sup> siècle*, 1988.
23. MOHAMMADOU, Eldridge: *Traditions Historiques des Peuples du Cameroun Central*, 1990.
24. MOHAMMADOU, Eldridge: *Traditions Historiques des Peuples du Cameroun Central Vol.2*, 1991.
25. KIMURA, Eiko: *Mabadiliko ya Kijamii Na Rimaya ya Upelelezi Tanzania (Social Changes and Detective Novels of Tanzania)*, 1992 (M.A.dissertation presented to University of Dar es Salaam).
26. KAJI Shigeki: *Vocabulaire Lingala classifié*, 1992.

### **Sudan Sahel Studies (in English and French)**

1. TOMIKAWA Morimichi (ed.), 1984.
2. TOMIKAWA Morimichi (ed.), 1984.

### **Boucle du Niger**

1. KAWADA Junzo, 1988.
2. KAWADA Junzo, 1990.
3. KAWADA Junzo, 1992.

### African Urban Studies

1. HINO Shun'ya (ed.),1990.
2. HINO Shun'ya (ed.),1992.

### ILCAA African Literature Series

1. WUFELA YAEK'OLINGO,André: *Litterature et Politique en Afrique Noire*,1992.
2. WUFELA YAEK'OLINGO,André: *Litterature Africaine et Christianisation de l'Afrique Noire*,1992.

### AA-KEN Caribbean Study Series

1. YAMAGUCHI Masao & NAITO Masao (eds.): *Comparative Studies on the Plural Societies in the Caribbean* Vol.1, 1985 (in Japanese).
2. VERNON, Diane: *Money Magic in a Modernizing Maroon Society*, 1985.
3. YAMAGUCHI Masao & NAITO Masao (eds.): *Social and Festive Space in the Caribbean; Comparative Studies on the Plural Societies in the Caribbean*, Vol. 2, 1987.

### Studia Culturae Islamicae

1. NAKANO Akio: *Basic Vocabulary in Standard Somali (I)*, 1976.
2. MIKI Wataru: *Index of the Arab Herbalist's Materials*, 1976.
3. YAJIMA Hikoichi: *The Arab Dhow Trade in the Indian Ocean*, 1976.
4. NAGATA Yuzo: *Some Documents on the Big Farms (Çiftlik) of the Notables in Western Anatolia*, 1976.
5. MIYAJI Kazuo: *"Kacem Ali"; Monographie d'un domaine autogéré de la plaine de Mitidja (Algérie)*, 1976.
6. MIYAJI Mieko: *L'émigration et le changement socio-culturel d'un village Kabyle (Algérie)*, 1976.
7. 'Abd al-Rahîm 'Abd al-Rahmân & MIKI Wataru: *Village in Ottoman Egypt and Tokugawa Japan ; A Comparative Study*, 1977.
8. M. Salah Ahmed, HONDA Gisho & MIKI Wataru: *Herb Drugs and Herbalists in the Middle East*, 1979.
9. YAJIMA Hikoichi & KAMIOKA Koji: *The Inter-Regional Trade in the Western Part of the Indian Ocean ; The Second Report on the Dhow Trade*, 1979 (in Japanese).
10. KAMIOKA Koji & YAMADA Minoru: *Lâri Basic Vocabulary ; Lârestâni Studies 1*, 1979.
11. NAGATA Yuzo: *Materials on the Bosnian Notables*, 1979.
12. SHIMIZU Kosuke: *Bibliography on Saljuq Studies*, 1979.
13. HANEDA Koichi & GANJELU, Ali : *Tabrizi Vocabulary; an Azeri-Turkish Dialect in Iran*, 1979.
14. NAKANO Akio: *Report on Moroccan Urban and Rural Life I ; Ethnographic Texts in Moroccan Arabic*, 1979.
15. TSUGE Yoichi : *Ethnographic Texts in Amaharic (I)*, 1982.
16. YAJIMA Hikoichi(ed.): *Hasan Tāj al-Dīn's The Islamic History of the Maldive Islands (D. 1139 A. H./1727 A. D.)*, Vol. 1 (Arabic Text), 1982.
17. NAKANO Akio: *Somali Folktales (1) ; Texts in Somali [1]*, 1982.
18. NAKANO Akio: *Folktales of Lower Egypt (1) ; Texts in Egyptian Arabic [1]* , 1982.
19. BELLAKADARI, Jamal, HONDA Gisho & MIKI Wataru : *Herb Drugs and Herbalists in the Maghrib*, 1982.
20. YAMAGATA Takao: *Coptic Monasteries at Wadi al Natrun in Egypt ; from the Field Notes on the Coptic Monks' Life*, 1983.
21. BAYKARA, Tuncer: *Yatağan ; Her şeyi ile 'Tarihi Yasatma Denemesi'* , 1984.
22. YAJIMA Hikoichi (annotated): *Hasan Tāj al-Dīn's The Islamic History of the Maldive Islands*, Vol. 2, 1984.
23. NAGHIZADEH, Mohammadou: *The Role of Farmer's Self-Determination, Collective Action and Cooperatives in Agricultural Development ; A Case Study of Iran*, 1984.
24. ABDUSALAM, Adel: *The Rural Geographical Environment of the Syrian Coastal*

- Region and the Shizuoka Region ; A Comparative Study of Syria and Japan*, 1985.
25. ABDULSALAM, Adel: *Adighean (Western Circassian) Vocabulary*, 1985.
  26. TSUGE Yoichi: *Ethnographical Texts in Amharic (2)*, 1985.
  27. BASER, K.H.C, HONDA Gisho & MIKI Wataru: *Herb Drugs and Herbalists in Turkey*, 1986.
  28. USMANGHANI, Khan, HONDA Gisho & MIKI Wataru: *Herb Drugs and Herbalists in Pakistan*, 1986.
  29. NAKANO Akio: *Comparative Vocabulary of Southern Arabic (Mahri, Gibbali and Soqotri)*, 1986.
  30. KAMIOKA Koji, Ataollah RAHBAR & Akbar HAMIDI, Ali: *Comparative Basic Vocabulary of Khonji and Larī ; Lārestāni Studies 2*, 1986.
  31. YAJIMA Hikoichi: *Arwād Island ; A Case Study of Maritime Culture on the Syrian Coast*, 1986 (in Japanese).
  32. TAKESHITA Masataka: *Ibn 'Arabi's Theory of the Perfect Man and Its Place in the History of Islamic Thought*, 1987.
  33. HAYASI Tooru: *A Turkish Dialect in North-Western Anatolia ; Bolu Dialect Materials*, 1988.
  34. PARSINEJAD, Iraj: *Mirza Fath Ali Akhundzadeh and Literary Criticism*, 1988.
  35. SATO Tsugitaka: *The Syrian Coastal Town of Jabala ; Its History and Present Situation*, 1988.
  36. YAJIMA Hikoichi & KAMIOKA Koji: *Caravan Routes Across the Zagros Mountains ; Maymand Route*, 1988 (in Japanese).
  37. KAMIOKA Koji, HANEDA Koichi & YAJIMA Hikoichi: *Periodic Markets in Gīlān ; A Preliminary Report*, 1988 (in Japanese).
  38. HAKAMI, Nasrine F.: *Pèlerinage de l'Emām Rezā ; Étude Socio-économiques*, 1989.
  39. HONDA Gisho, MIKI Wataru & SAITO Mitsuko: *Herb Drugs and Herbalists in Syria and North Yemen*, 1990.
  40. OHTA Keiko (collated & annotated): *The History of Aleppo ; Known as ad-Durr al-Muntakhab by Ibnash-Shihna*, 1990.
  41. Raouf Abbas Hamed: *The Japanese and Egyptian Enlightenment; A Comparative Study of Fukuzawa Yukichi and Rifa' ah al-Tahtāwī*, 1990.
  42. YAMAUCHI Masayuki: *The Green Crescent under the Red Star ; Enver Pasha in Soviet Russia 1919 - 1922*, 1991.
  43. NISHIO Tetsuo: *A Basic Vocabulary of the Bedowin Arabic Dialect of the Jbāli Tribe (Southern Sinai)*, 1992.
  44. HITAKA Hidemi (ed.): *Chronology of Modern Iranian Politics, March 1946 - March 1949*, 1992 (in Japanese).

### Monumenta Serindica

1. IJIMA Shigeru (ed.): *Changing Aspects of Modern Nepal ; Relating to the Ecology, Agriculture and Her People*, 1977.
2. HASHIMOTO Mantaro J.(compl.): *The Newari Language ; A Classified Lexicon of Its Bhadgaon Dialect*, 1977.
3. KITAMURA Hajime (ed.): *Glo Skad ; A Material of a Tibetan Dialect in the Nepal Himalayas*, 1977.
4. MATISOFF, James A.: *Mpi and Lolo-Burmese Microlinguistics*, 1978.
5. HOSHI Michiyo & Tondup Tsering: *Zangskar Vocabulary ; A Tibetan Dialect Spoken in Kashmir*, 1978.
6. KITAMURA Hajime, NISHIDA Tatsuo & NISHI Yoshio (eds.): *Tibeto-Burman Studies I*, 1979.
7. NAGANO Yasuhiko: *Amdo Sherpa Dialect ; A Material for Tibetan Dialectology*, 1980.
8. NISHIDA Tatsuo: *The Structure of the Hsi-hsia (Tangut) Characters*, 1980.
9. THURGOOD, Graham: *Notes on the Origins of Burmese Creaky Tone*, 1981.
10. BISTA D. B., IJIMA Shigeru, ISHII Hiroshi, NAGANO Yasuhiko & NISHI Yoshio: *Anthropological and Linguistic Studies of the Gandaki Area in Nepal*, 1982.
11. KARAN, Pradyumna P., PAUER, Gyula & IJIMA Shigeru: *Map ; The Kingdom of Nepal*, 1983.

12. TACHIKAWA Musashi, MIKAME Kiyotomo, HOSHI Michiyo & NAGANO Yasuhiko: *Anthropological and Linguistic Studies of the Gandaki Area in Nepal II*, 1984.
13. KARAN, Pradyumna P., PAUER, Gyula & IJIMA Shigeru: *Sikkim Himalaya; Development in Mountain Environment*, 1984.
14. MALLA, Kamal P.: *The Newari Language; A Working Outline*, 1985.
15. ISHII Hiroshi, TACHIKAWA Musashi, NAKAZAWA Shin'ichi, NAGANO Yasuhiko, & HOSHI Michiyo: *Anthropological and Linguistic Studies of the Kathmandu Valley and the Gandaki Area in Nepal*, 1986.
- 15a. SHARMA, Prayag Raj, MIKAME Kiyotomo & YAMAMOTO Yuji: *Aspects of the Dynamics of Nepalese Languages, Cultures and Societies*, 1986 (in Japanese).
16. SUN, Jackson T. S.: *Aspects of the Phonology of Amdo Tibetan: Ndzorge Sæme X̣ra Dialect*, 1986.
17. KARAN, Pradyumna P., PAUER, Gyula & IJIMA Shigeru: *Bhutan: Development amid Environmental and Cultural Preservation*, 1987.
18. EINOO Shingo: *Die Cāturmāsya oder die altindischen Tertialopfer dargestellt nach den Vorschriften der Brāhmanas und der Śrautasūtras*, 1988.
19. SUWA Tetsuo: *Two Essays on the Formation of the East Asian Ethnic World*, 1989.
20. FINCHER John H.: *Chinese Democracy ; Statist Reform, the Self-Government Movement and Republican Revolution*, 1989.
21. SEKINE Yasumasa: *Theories of Pollution ; Theoretical Perspective and Practice in a South Indian Tamil Village*, 1989.
22. SHIMA Iwao: *A Newar Buddhist Temple Mantrasiddhi Mahāvihāra and a Photographic Presentation of Gurumandalapūjā*, 1991.

#### **Studies in Socio-Cultural Change in Rural Villages in Tiruchirapalli District, Tamilnadu, India**

1. KARASHIMA Noboru, SUBBARAYALU, Yellava & SHANMUGAM, P.: *Land Control and Social Change in the Lower Kaveri Valley from the 12th to 17th Centuries*, 1980.
2. HARA Tadahiko & KOMOGUCHI Yoshimi: *Socio-Economic Studies of Two Villages; Esanakorai and Perwalanallur, Lalgudi Taluk*, 1981.
3. YANAGISAWA Haruka: *Historical Change in Rural Villages of the Kaveri Valley in South India ; Land Tenure in Appadurai Village, Lalgudi Taluk*, 1981 (in Japanese).
4. SUBBIAH P., MIZUSHIMA Tsukasa & NARA Tsuyoshi: *Socio-Economic Studies of Two Villages; Mahizambadi and Neykulam, Lalgudi Taluk*, 1981 (part in Japanese).
5. NAKAMURA Hisashi: *Disintegration and Re-integration of a Rural Society in the Process of Economic Development; The Second Survey of a Tank-based Village in Tamil Nadu*, 1982.

#### **Socio-Cultural Change in Villages in Tiruchirapalli District, Tamilnadu, India**

1. KARASHIMA Noboru (ed.): Part 1; Pre-modern Period, 1983.
2. HARA Tadahiko, MIZUSHIMA Tsukasa & NAKAMURA Hisashi: Part 2; Modern Period 1, 1983.
3. YANAGISAWA Haruka: Part 2; Modern Period 2, 1983.
4. KOMOGUCHI Yoshimi: Part 2; Modern Period 3, 1984.

#### **Studies in Socio-Cultural Change in Rural Villages in Bangladesh**

1. UMITSU Masatomo & HARA Tadahiko, 1985.
2. FAROUK, Abdullah, 1985.
3. TANIGUCHI Shinkichi & SATO Hiroshi, 1985.
4. ISLAM, Sirajul, 1985.
5. CHOWDHURY, Anwarullah, 1987.
6. TANIGUCHI Shinkichi, 1987.
7. SATOH Tetsuo & UMITSU Masatomo, 1987.
8. FAROUK, Abdullah, 1987.
9. MOHSIN, K. M., 1990.

## South Asian Monograph

1. KAWAI Akinobu, *'Landlords' and Imperial Rule: Change in Bengal Agrarian Society c 1885 - 1940*, Vo.1, 1986, Vol.2, 1987 .
2. MIZUSHIMA Tsukasa: *Studies on South Indian Society*, 1987 (in Japanese).

## Reports of Joint-Research Projects (in Japanese and other languages)

1. *Study on the Materials of National Language Education in Asian and African Countries ; An Interim Report*, 1966.  
*The Material List of National Language Education in Asian and African Countries*, 1967.
2. *Report on Islamization and Modernization in Asia and Africa*  
Nos. \*1 (1968), \*2 (1969), \*3 (1970), \*4 (1971), \*5 (1972), \*6 (1973), 7 (1982), 8·9 (1986).
3. *Study of Modern Indo-Pakistan Literature*, Nos.1 (1970), 2 (1971), 3 (1972).
4. *Religious Movements in Asia and Africa*, Nos. \*1 (1972), \*2 (1972), \*3 (1973).
5. *Asian and African Linguistics*  
Nos. \*1 (1972), 2 (1973), 3 (1974), 4 (1975), 5 (1976), 6 (1977), 7 (1978), 8 (1979), 9 (1980), 10 (1981), 11 (1982), 12 (1983), 13 (1984), 14 (1985), 15 (1986), 16 (1987), 17 (1988), 18 (1989), 19 (1990), 20(1991).
6. *Asian and African Grammatical Manuals*,

*11	<i>Korean</i> (UMEDA H.)	1973	*17	<i>Persian</i> (KAMIOKA K.)	1976
11z	<i>Sakhalin Ainu</i> (MURASAKI K.)	1978	17b	<i>Baluchi</i> (NAWATA T.)	1981
*12b	<i>Fukienese</i> (NAKAJIMA M.)	1976	17m	<i>Mazandarani</i> (NAWATA T.)	1984
*12z	<i>Tibetan</i> (KITAMURA H.)	1977	17p	<i>Parachi</i> (NAWATA T.)	1983
13	<i>Indo-Aryan</i> (ISIGAKI Y.)	1980	*17s	<i>Shughni</i> (NAWATA T.)	1980
13a	<i>Hindi</i> (MIZOKAMI T.)	1980	*20	<i>African</i> (ISIGAKI Y.)	1975
*13b	<i>Marathi</i> (NAITO M.)	1976	*21	<i>Swahili</i> (MORINO T.)	1976
13c	<i>Bengali</i> (NARA T.)	1979	*22a	<i>Cushitic</i> (ISIGAKI Y.)	1972
13d	<i>Khaling</i> (TOBA S.)	1979	22b	<i>Ethiopic</i> (ISIGAKI Y.)	1978
13e	<i>Panjabi</i> (MIZOKAMI T.)	1981	*23	<i>Hausa</i> (MATSUSHITA S.)	1974
13x	<i>Tamil</i> (TOKUNAGA M.)	1981	*26	<i>Fulfulde</i> (EGUCHI P.K.)	1974
13y	<i>Malayalam</i> (ITO S.)	1978	33	<i>Romance &amp; Greek</i> (ISIGAKI Y.)	1973
*14a	<i>Cambodian</i> (SAKAMOTO Y.)	1974	33y	<i>Basque</i> (ISIGAKI Y.)	1979
*14b	<i>Burmese</i> (YABU S.)	1974	33z	<i>Maltese</i> (ISIGAKI Y.)	1977
14c	<i>Thai</i> (MORI M.)	1975, 1984	34a	<i>Albanian</i> (ISIGAKI Y.)	1979
15b	<i>Philippine Languages</i> (YAMADA Y. & TSUCHIDA S.)	1975, 1983	*36	<i>Uralic, etc.</i> (ISIGAKI Y.)	1976
*16b	<i>Samoan</i> (ODA M.)	1977	40	<i>USSR Major</i> (ISIGAKI Y.)	1980

7. *Comparative Studies of Societies in Africa*  
No. 1 *Nature and Function of Tribal Societies in Africa*, 1971.  
No. 2 *Territoriality in African Societies*, 1973.
8. *Turks and the Islamic World*, No.1 (1974).
9. *Computational Analyses of Asian & African Languages (CAAAL)* (in English unless otherwise indicated): No. 1 (1975) -No. 30 (1988), including CAAAL *Monographs* as follows:  
\*No. 4 T' SOU, Benjamin K: *A Single Character Index to the No-geol-dae Eon-hae*, 1976 (in Chinese).  
\*No. 5 SAKAMOTO Yasuyuki: *A Khmer-Japanese Dictionary*, 1976.  
\*No. 12 YUE, Anne O.: *The Teng-xian Dialect of Chinese ; Its Phonology, Lexicon and Texts with Grammatical Notes*, 1979.  
\*No. 14 LAN 'Ching-han: *The Yilan Dialect of Chinese ; Its Classified Lexicon with Grammatical Notes* (notes in Japanese, and lexical index in Chinese & English), 1980.  
No. 15 SHERARD, Michael: *A Synchronic Phonology of Modern Colloquial Shanghai*, 1980.  
\*No. 17 FU, Maoji: *A Study on a Naxi Pictograph Manuscript, "White Bat's Search for Sacred Books"*, Vol. 1, 1981 (in Chinese).

- \*No. 18 XU, Lin & MU, Yuzhang: *A Study on the Genesis of the Lisu People*, 1981 (in Chinese).
- No. 20 SHERARD, Michael: *Lexical Survey of the Shanghai Dialect*, 1982.
- No. 23 FU, Maoji: *A Study on a Naxi Pictograph Manuscript, "White Bat's Search for Sacred Books"*, Vol. 2. 1984 (in Chinese).
- No. 25 BENEDICT, Paul K.: *Breakthrough, Southeast Asia to Japan ; Anthropologists and Linguists at Work*, 1985 (tr. into Japanese by NISHI Yoshio).
- \*No. 27 XU, Lin: *A Study of the Bai Story "The Huang Family Woman and the Vajracchedikā"*, 1986 (in Chinese).
- \*No. 29 XU, Lin: *A Study of the Bai Story "The Huang Family Woman and the Vajracchedikā", (continuation)*, 1988 (in Chinese).
10. *Oceanic Studies*, 1, 1976.
11. *Basic Documents; A Historical Study on the Partition of India*, I (1976), II (1977).
12. *Studies on Agrarian Societies in South Asia*, Nos. 1 (1977), 2 (1978), 3 (1979), 4 (1979), 5 (1980), 6 (1985), 7 (1987), 8 (1987).
13. YAK, Nos. \*1 (1977), 2 (1978), 3 (1979), 4 (1980), 5 (1981), 6 (1982), 7 (1983), 8 (1988).
14. *Urban-Relations in Africa*, 1980.
15. *Reprint Series; Japanese Language and Culture*, Nos. 1 (1981), 2 (1982).
16. *Phraseological Questionnaire*, Vol. 1 Nos. 1-2(1982), Vol. 3 No. 1 (1981).
17. *Performance in Culture*  
 No. 1 BEEMAN, William O. : *Culture, Performance and Communication in Iran*, 1982.
- \*No. 2 AWASTHI, Suresh: *Drama; The Gift of Gods-culture, Performance and Communicaton in India*, 1983.
- \*No. 3 NAGASHIMA Yoshiko S.: *Rastafarian Music in Contemporary Jamaica; A Study of Socioreligious Music of the Rastafarian Movement in Jamaica*, 1984.
- No. 4 AND, Metin: *Culture, Performance and Communication in Turkey*, 1987.
- No. 5 OCHIAI Kazuyasu: *Meanings Performed, Symbols Read; Anthropological Studies on Latin America*, 1989.
- No. 6 RAZ, Jacob: *Aspects of Otherness in Japanese Culture*, 1992.
18. *Nationalism in Asia and Its International Relations*  
 No. 1 *Transformation and Peasant Movements in Contemporary Asia*, 1985 .  
 No. 2 *Political Development and International Relations in Asia*, 1986.
19. *Studies on Symbolism and World View*  
 Vol. 1 TAKACHIO Hitoshi: *Kyūtai Yūgi; The Symbolic Representation of Globes*, 1986.  
 Vol. 2 HASHIMOTO Hiroyuki: *The Onmatsuri of Kasuga Wakamiya Shrine and the Cosmology of Nara*, 1986.
20. *The Study of Popular Cultures in the Third World*  
 No. 1 HARA Tadahiko: *Preliminary Analysis of the World View of Indian Comics/ Picture Books*, 1988.
21. *Comparative Study on Community Organisation in South Asia*  
 No. 1 YANAGISAWA Haruka & MIZUSHIMA Tsukasa: *Caste and Landholdings in South India at the Beginning of the Twentieth Century*, 1988.  
 No. 2 KARASHIMA Noboru, SUBBARAYALU, Yellava & SHANMUGAM, P.: *Vijayanagar Rule in Tamil Country as Revealed Through a Statistical Study of Revenue Terms in Inscriptions*, 1988.  
 No. 3 KARASHIMA Noboru, SUBBARAYALU, Yellava & SHANMUGAM P.: *Vijayanagar Rule in Tamil Country as Revealed Through a Statistical Study of Revenue Terms in Inscriptions, Part Two (Appendix III)* , 1989.  
 No. 4 NAITO Masao (ed.): *Communities and Social Changes in Modern South Asia*, 1990.
22. *A Comparative Study on the Modes of Inter-Action in Multi-Ethnic Societies*  
 1. *Studies on Malaysian Society*, No. 1, 1988.  
 2. *Studies on Malaysian Society*, No. 2, 1989.
23. *A Comparative Study on the Modes of Inter-Action in Multi-Ethnic Societies: Monograph Series:*  
 No. 1 FUJIMOTO Helen: *The South Indian Muslim Community and the Evolution of the Jawi Peranakan in Penang up to 1948*, 1988.



- No. 2 MIZUSHIMA Tsukasa: *A Study of Local Society in South India in the 18th-19th Centuries*, 1991.
24. *ILCAA Southeast Asian Studies*  
 No. 1 IKEHATA Setsuho, TERAMI Motoe & HAYASE Shinzo: *Japan-Philippine Relations at the Turn of the Century*, 1989.  
 No. 2 ITO Toshikatsu, KURIHARA Hirohide, NAKANO Satoshi & NEMOTO Kei: *Southeast Asian Nationalist Movements in Urban and Rural Areas*, 1991.
25. *Research on the Mechanism of Cultural Contacts in the Islamic World*, 1 (1989), 2 (1991).
26. *Lexicological Studies*, Nos. 1 (1989), 2 (1990), 3 (1991), 4 (MACHIDA Kazuhiko, *A Reverse Dictionary of the Hindi Language*, 1992).
27. *Studies of Linguistic and Cultural Contacts*  
 No. 1 (1989)  
 No. 2 HOU Jing-yi: *A Classified Vocabulary of the Pingyao Dialect of the Jin Dialect*, 1990.  
 No. 3 Pular Osor Cog: *A Classified Vocabulary of the Evenki Language*, 1991.  
 No. 4 SHI Ming-yuan: *A Study of the Ju Dialect of Shandong Province*, 1992.
28. *Annual Report on CIIL-ILCAA Joint Research Project*, No. 1 (1990), No. 2 (1991), No. 3 (1992).
29. MIZUSHIMA Tsukasa: *A Study of Local Society in South India in the 18th-19th Centuries*, 1991.
30. OSADA Toshiki: *A Reference Grammar of Mundari*, 1992.

### South Asians Abroad Series

- No.1 KOGA Masanori (ed.) : *South Asian Community Organisations in East Africa, the United Kingdom, Canada & India*, 1992 .

### Textbooks for Language Training

- |                                |                                      |   |
|--------------------------------|--------------------------------------|---|
| *Tibetan, 5 vols, 1974.        | *Pashto, 3 vols, 1981.               | Persian, 4 vols, 1988.                            |
| *Korean, 3 vols, 1974.         | *Arabic, 2 vols, 1982.               | Turkish, 4 vols, 1988.                            |
| *Khmer, 5 vols, 1975.          | *Hungarian, 2 vols, 1982.            | Bengali, 1 vol, 1989.                             |
| *Bengali, 1 vol, 1975.         | *Tibetan, 3 vols, 1983.              | Vietnamese, 2 vols, 1989.                         |
| *Burmese, 5 vols, 1976.        | *Finnish, 3 vols, 1983.              | Egyptian Arabic, 2 vols, 1989.                    |
| *Persian, 3 vols, 1976.        | Panjabi, 3 vols, 1983.               | Korean, 3 vols, 1990.                             |
| *Swahili, 2 vols, 1976.        | *Pilipino, 2 vols, 1984.             | Indonesian, 3 vols, 1990.                         |
| *Cantonese, 4 vols, 1977.      | Yoruba, 2 vols, 1984.                | Persian, 4 vols, 1990.                            |
| *Marathi, 3 vols, 1977.        | Turkish, 3 vols, 1984.               | Estonian, 2 vols, 1991.                           |
| *Mongolian, 4 vols, 1977.      | *Korean, 3 vols, 1985.               | Burmese, 3 vols, 1991.                            |
| *Turkish, 3 vols, 1978.        | Khmer, 4 vols, 1985.                 | Chinese, 4 vols, 1991.                            |
| *Thai, 2 vols, 1987.           | Swahili, 5 vols, 1985.               | Egypt Coloquial Arabic, 2 vols, 1992.             |
| Persian, 3 vols, 1978.         | Southwestern Mandarin, 2 vols, 1986. | Nepali, 3 vols, 1992.                             |
| Hausa, 3 vols, 1979.           | Tamil, 2 vols, 1986.                 | Pilipino, 3 vols, 1992.                           |
| *Burmese, 3 vols, 1979.        | Bengali, 3 vols, 1986.               | [Sup.Material] 1. Swahili in 3 days, 1 vol, 1985. |
| *Nepali, 3 vols, 1980.         | Thai, 4 vols, 1986.                  |   |
| *Mongolian, 2 vols, 1980.      | Singhalese, 3 vols, 1987.            |   |
| *Vietnamese, 4 vols, 1980.     | Central Mandarin 1 vol, 1987.        |   |
| Standard Chinese, 1 vol, 1981. | Indonesian, 3 vols, 1988.            |   |
| *Hindi, 3 vols, 1981.          |                                      |   |

### Specific Language Research

1. *Writing and Language Reference Materials*, Nos. \*1(1978), 2 (1978), \*3 (1978), 4 (1979), 5 (1979), 6 (1980), 7 (1980).
2. *Improvement of the Teaching Methods of Japanese and Other Asian and African Languages on the Basis of Their Contrastive Studies*  
 \*Materials Nos. 77- 1, 2, 3, 78-1, 2, 5, 6, 7, 8, 79-1a, 1b, 3, 5, 6, 7, 8.

### Computer Manual Series

- No. 1 *VSAMEDIT* (Text-editor, 1984).
- No. 2 *FONTMAKER* (Font-maker, 1985).
- No. 3 *BUNPOO* (Code-converter, 1982).
- No. 4 *AAFE* (Font-editor, 1985).
- No. 5 *AATEDIT* (Text-editor for non-Latin texts, 1985).
- No. 6 *Dictionary Search and Display* (1986).
- No. 7 *TEDIT* (Full-screen text-editor, 1990).
- No. 8 Electronic Dictionary Search/Display System "DICSEARCH"

### Computer List/Parameter Series

- No. 1 *Character Font List* (1988).
- No. 2 *Character Font List* (1989).
- No. 3 *Character Font List* (1990).
- No. 4 *Character Font List* (1991).

### Data for the Study of Languages of Asia and Africa Series

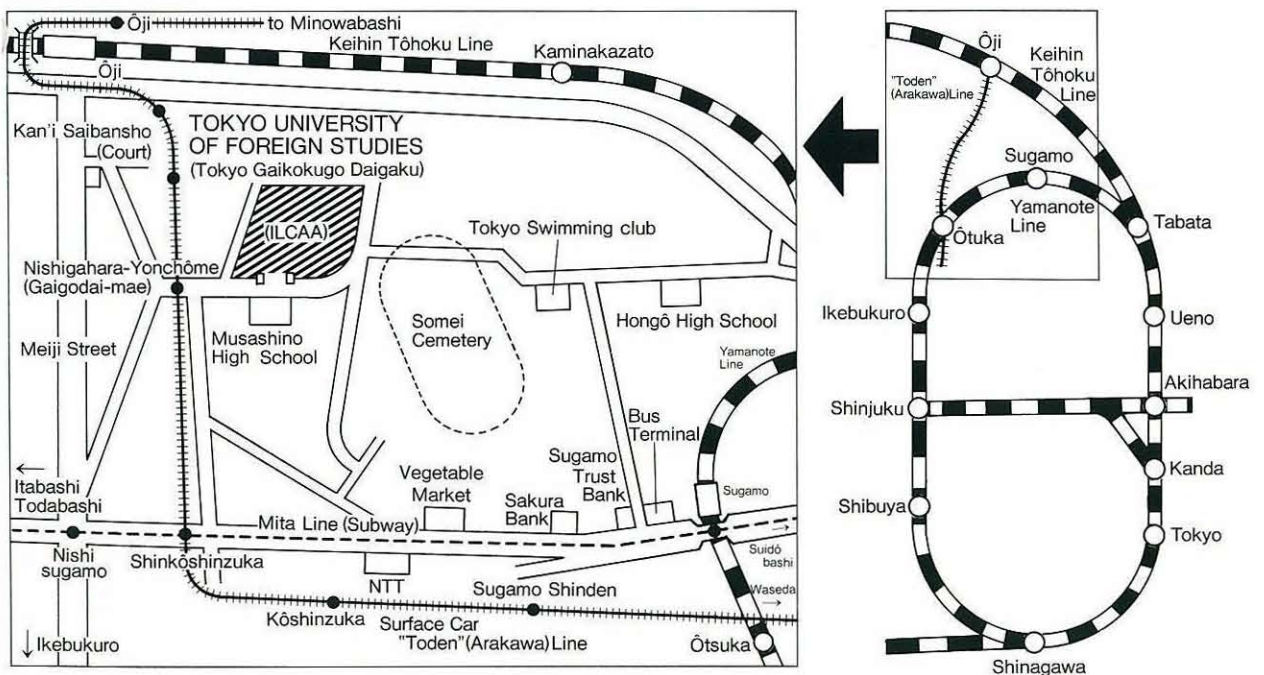
- No. 1 *Inscriptions Modernes d'Angkor; KWIC Index* (1986).
- No. 2 *South-Asian Series; Bengali Language 1* (1987).
- No. 3 *South-Asian Series; Bengali Language 2* (1989).
- No. 4 *Austro-Asiatic Series; Khmer 2* (1989).
- No. 5 MALLIK, Bhakti Prasad, NARA Tsuyoshi & SAKAMOTO Yasuyuki: *South-Asian Series ; Bengali Language 3*, (1991).

### Miscellanea

1. CONSTANTINO, Ernesto: *Isinay Texts and Translations*, 1982.
2. EL - ARABY, Salah A.: *Intermediate Egyptian Arabic ; An Integrative Approach*, 1983.
3. JAGCHID, Sechin: *Prince Demchügdüngrüb and Inner Mongolia ; My Reminiscence*, 1985 (in Chinese).
4. MA Zhenet et al. : *Descriptive Study of Basic Sentence Patterns of South-western Mandarin*, 1986.
5. DOWNS, James F.: *Tibetan Pilgrimage*, 1987.
6. HE Wei: *Collected Essays on Chinese Dialects*, 1987.
7. LI Rong: *Dujiangshu Shiwuyin; A Chinese Rhyme Book in the Minnan Dialect*, 1987 (in Chinese).
8. HOU Jing-yi: *Studies of the Jin Dialects*, 1989 (in Chinese).
9. ZHAONASITU (Junast): *hP'hags-pa Script & Mongolian Materials I ; Research Articles*, 1990 (in Chinese)
10. ZHAONASITU (Junast): *hP'hags-pa Script & Mongolian Materials II; Source Materials*, 1991 (in Chinese).
11. NAI PAN HLA: *The Significant Role of the Mon Version Dharmaśāstra*, 1991.
12. REID, Lawrence A., *Guinaang Bontok Texts*, 1992.
13. VIETZE, Hans Peter : *Altan Tobči ; Text und Index*, 1992.
14. NAI PAN HLA: *The Significant Role of Mon Language and Culture in Southeast Asia*, Part I, 1992.

The easiest way to get to the Institute is take the Surface Car “ Toden” (Arakawa Line) from Otsuka Station on the Yamanote Line, or from Oji Station on the Keihin Tohoku Line. Alight at Nishigahara Yonchome (Gaigodai-mae), from where it is a 400-meter walk to the main gate of the University (refer to map below).

The Institute may also be reached by walking from Sugamo Station on the Yamanote Line and from Nishi-Sugamo Station on the Mita Line (subway), but this route is not recommended for the uninitiated.



(Cover Photograph):

Esoteric tattooing patterns on the back of an elderly Tai Lue monk, Jing Hong, Xishuang Banna, Southern Yunnan, China (雲南省西雙版納州景洪). This tattoo has secret signs contained in squares, an arrangement similar to that of the Shans in Burma during the 19th century. In the old Tai Lue Kingdom of Sipsong Panna, men tattooed most parts of their bodies, by pricking the skin with a needle filled with pigment to impart colour; vermilion for the upper classes and black for commoners. Some even endured the pain of inserting small precious stones under loose skin on their arms, or scalps, as bodily adornments. Here, as elsewhere in South-East Asia, tattooing appears to have primarily served a talismanic function; people believed that magically powerful designs of animals both mythical and real, religious formulae and geometrical shapes conferred on their bodies the special powers, of invulnerability and bravery. In traditional society Tai Lue women held un-tattooed men in derision, despising them for their lack of these qualities. Tattooing has rapidly declined since the full incorporation of the Sipsong Panna Kingdom into China in 1952. (Orig. Photo: Christian Daniels, 17 January, 1990)