

図書室

BULLETIN

INSTITUTE FOR THE STUDY OF
LANGUAGES AND CULTURES
OF ASIA AND AFRICA
(ILCAA)

TOKYO GAIKOKUGO DAIGAKU

1965

Contents

1. Aims and functions	3
2. Field of activities	3
3. Organization (1965)	4
(1) Diagram of the organization	4
(2) Research departments	4
(3) Administrative sections	6
4. Present personnel of both research and administration departments	6
5. Administrative committee	7
6. Expert committee	9
(1) Equipment committee	9
(2) Language teaching committee	9
(3) Linguistic questionnaire compilation committee	9
(4) Language education materials research committee	10

1. Aims and Functions

The Institute for the Study of Languages and Cultures of Asia and Africa (ILCAA) is a national institution whose objective is to study comprehensively the living languages throughout Asia and Africa with their historical and cultural backgrounds.

Acting on a recommendation of the Science Council of Japan, ILCAA was established on April 1st 1964, as an organ attached to the Tokyo University of Foreign Studies, to function as the first academic organ in the field of humanities intended to serve scholars throughout Japan.

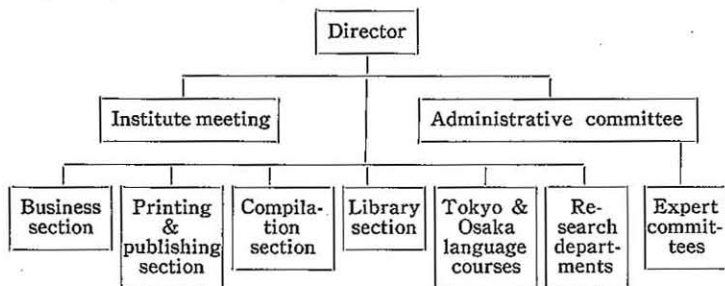
2. Field of Activities

The activities of ILCAA are:

- (1) to make comprehensive studies of, and collect research materials pertaining to, the languages and cultures of Asia and Africa;
- (2) to compile and publish dictionaries and grammars of the languages of Asia and Africa;
- (3) to teach the languages of Asia and Africa, and to train specialists in those languages;
- (4) to develop the study of languages not yet dealt with in Japan;
- (5) to send experts to the areas of Asia and Africa;
- (6) to keep in contact with research institutions at home and overseas; and
- (7) to perform such other functions as are necessary for the achievement of the Institute's aims.

3. Organization

(1) Diagram of the organization



(2) Research departments

Area	No.	Research department	Field of research	Number of personnel
Generalia	1	Language-Culture I	General linguistics, Descriptive linguistics, Lexical linguistics, Phonology, Experimental phonetics, etc.	5
	2	Language-Culture II	Anthropology, History, Geography, etc.	5
East Asia	3	Northeast Asian Languages & Cultures	Korean, Tungus, Gilyak, Ainu, etc.	5 (*1)
	4	Chinese Languages & Cultures	Pekinese, Wu-dialect, Fukien-dialect, Cantonese, Hakka-dialect, etc.	5 (*1)
North & Central Asia	5	Mongolian Languages & Cultures	Mongolian (Literary Mongolian, Khalkha-dialect, Buriat-dialect, etc.)	5 (*1)
	6	Tibetan Languages & Cultures	Tibetan (Modern Tibetan, Literary Tibetan), etc.	5 (*1)
	7	Turco-Uralian Languages & Cultures	Turkic and Uralian (Finnish, Hungarian, etc.)	5 (*1)

Area	No.	Research department	Field of research	Number of personnel
Southeast Asia	8	Indochinese Languages & Cultures I	Vietnamese, Thai, Laotian, etc.	5 (*1)
	9	Indochinese Languages & Cultures II	Burmese, Mon, Cambodian, etc.	5 (*1)
	10	Indonesian & Oceanian Languages & Cultures	Indonesian, Malayan, Javanese, Tagalog, Bisaya, Melanesian, Polynesian, Papuan, etc.	5 (*1)
South Asia	11	Indian Languages & Cultures I	Hindi, Urdu, Bengali, Sinhalese, Nepali, Sanskrit, Pali, etc.	5 (*1)
	12	Indian Languages & Cultures II	Dravidian, Munda, etc.	5 (*1)
	13	Iranian Languages & Cultures	Persian, Pushtu, Armenian, Georgian, etc.	5 (*1)
West Asia	14	Arabic Languages & Cultures	Iraqi, Syriac, Egyptian, Maghreb, Literary Arabic, Hebrew, Amharic, etc.	5 (*1)
Africa	15	African Languages & Cultures	Hausa, Fulani, Yoruba, Jukun, Mende, Swahili, Zulu, Xhosa, Somali, Berber, Afrikaans, etc.	5 (*1)
Total				75 (*13)

Note: (*) stands for the number of foreign instructors. Completion of departments is due by 1968.

(3) Administrative sections

Language courses	Tokyo Course Osaka Course	12
Library section	Library Receiving room of foreign radio broadcasts	15
Compilation section	Dictionary section Grammar section	10
Printing & publishing section	Publishing section Translation section Printing section	14
Business section	General affairs section Accountant section Liaison section	30
Total		81

4. Present Personnel of both Research and Administration Departments

Department	Professor	Asst. Professor	Research Assistant	Administrative officer	Technician	Junior clerk	Caretaker	Total
Language-Culture I	1	1	1			2		5
Indochina I	1	1	1			2		5
India I	1	1	1			2		5
Africa	1	1	1			2		5
Administrative				4		3	1	8
Total	4	4	4	4		11	1	28

Professor Dr. OKA, Masao	Director, Anthropology, Language-Culture Dept. I
Professor SIBATA, Takesi	Linguistics (Turkish), Language-Culture Dept. I
Lecturer UMEDA, Hiroyuki	Linguistics (Korean), Language-Culture Dept. I
Professor KAWABE, Toshio	History of Southeast Asia (Thai), Indochina Dept. I
Asst. Professor KITAMURA, Hajime	Linguistics (Tibetan and Burmese), Indochina Dept. I
Research Assistant SAKAMOTO, Yasuyuki	Linguistics (Cambodian), Indochina Dept. I
Lecturer NAKAMURA, Heiji	Modern History of India (Hindi and Urdu), India Dept. I
Lecturer NARA, Tsuyoshi	Linguistics (Bengali), India Dept. I
Research Assistant ISIGAKI, Yukio	Linguistics (Amharic), India Dept. I
Asst. Professor TOMIKAWA, Morimichi	Ethnology (Swahili), Africa Dept.
Lecturer YAMAGUTI, Masao	Anthropology (Hausa, Yoruba and Jukun), Africa Dept.
Research Assistant MORINO, Tsuneo	Linguistics (Swahili), Africa Dept.
Head of Administration	HIRAMATSU, Hisanao
Chief Officer in charge of General Affairs	SUMIDA, Hiroshi
Chief Accountant	IWATA, Katsumi

5. Administrative Committee

This is an advisory organ to the Director in matters of importance concerning the Institute.

Its members are:

ASAI, Erin	Linguistics, Professor of Nanzan University
BAN, Kosai	Linguistics, Professor of Osaka University of Foreign Studies

DOI, Kyuya	Linguistics, Professor of Tokyo University of Foreign Studies
FURUNO, Kiyoto	Anthropology, Professor of Doitsu-Kyokai University
HATTORI, Shirô	Linguistics, Professor of University of Tokyo
ICHIMATA, Masao	Member of Asia and Africa Special Committee, Science Council of Japan
ISHIDATE, Morizo	Member of Asia and Africa Special Committee, Science Council of Japan
IZUI, Hisanosuke	Linguistics, Professor of Kyoto University
KAIZUKA, Shigeki	History, Professor of Kyoto University
KANEGAE, Nobumitsu	Linguistics, Professor of Tokyo University of Foreign Studies
KAWABE, Toshio	History, ILCAA, Professor of Tokyo University of Foreign Studies
KONO, Rokuro	Linguistics, Professor of Tokyo University of Education
KUWAHARA, Takeo	Vice-President of Science Council of Japan, Professor of Kyoto University
MATSUDA, Hisao	History, Professor of Waseda University
MATSUMOTO, Nobuhiro	History, Professor of Keio University
SAKAMOTO, Koretada	History, Professor of Tokyo University of Foreign Studies
TOKUNAGA, Yasumoto	Linguistics, Professor of Tokyo University of Foreign Studies
TOMITA, Takejiro	Linguistics, Professor of Osaka University of Foreign Studies
WATANABE, Akira	Member of Asia and Africa Special Committee, Science Council of Japan: Geography, Professor of Ochanomizu Women's University
YAMAMOTO, Tatsuro	History, Professor of University of Tokyo

6. Expert Committee

The purpose of this committee is to work out a concrete research plan for ILCAA to function effectively as an organ to serve all scholars of Japan.

(1) Equipment committee

The purpose of this committee is to assemble and maintain equipments, e. g. machines, tools, books, reference materials, etc.

Its members are:

HATTORI, Shirô; IZUI, Hisanosuke; KANEGAE, Nobumitsu; KONO, Rokuro; TOKUNAGA, Yasumoto; TOMITA, Takejiro (from Administrative Committee)
KAWABE, Toshio; KITAMURA, Hajime; SIBATA, Takesi (from ILCAA)

In 1964, the items of equipment were:

experimental apparatus, printing machinery, gramophones, taperecorders, cameras, radios, books, dictionaries, grammars, linguistic data, Linguaphones, etc.

(2) Language teaching committee

The purpose of this committee is to work out a plan for intensive language courses, regular lectures and general language teaching.

Its members are:

BAN, Kosai; DOI, Kyuya; HATTORI, Shirô; IZUI, Hisanosuke; KANEGAE, Nobumitsu; KONO, Rokuro; TOMITA, Takejiro; YAMAMOTO, Tatsuro (from Administrative Committee)
KAWABE, Toshio; KITAMURA, Hajime; SIBATA, Takesi; TOMIKAWA, Morimichi (from ILCAA)

(3) Linguistic questionnaire compilation committee

The purpose of this committee is to compile a vocabulary list for linguistic survey of Asia and Africa.

Its members are:

DOI, Kyuya; HATTORI, Shirô; IZUI, Hisanosuke; KONO, Rokuro; TOKUNAGA, Yasumoto; TOMITA, Takejiro (from Administrative Committee)
KITAMURA, Hajime; SIBATA, Takesi (from ILCAA)

Working groups, to be organized with respect to the various functions assigned to the committee, will be responsible for

carrying out the committee's plans. These groups will be formed around the research staff of ILCAA. In 1965, the committee's schedule will cover such activities as:

- (1) Preparation of linguistic questionnaires with reference to the languages of Asia and Africa: and
 - (2) Publication of basic vocabulary lists of Southeast Asian languages.
- (4) Language education materials research committee

The purpose of this committee is to carry out research and collect research materials pertaining to the language education in Asian and African countries, in order to facilitate the analysis of various national language policies at the present stage throughout those areas and to compile the lists of such materials.

Its members are:

DOI, Kyuya; KANEGAE, Nobumitsu; KONO, Rokuro;
TOKUNAGA, Yasumoto; TOMITA,³ Takejiro (from
Administrative Committee)

KAWABE, Toshio; KITAMURA, Hajime; MORINO, Tsune-
o; NAKAMURA, Heiji; NARA, Tsuyoshi; SIBATA, Takesi,
TOMIKAWA, Morimichi; UMEDA, Hiroyuki (from ILCAA)

**Published in September 1965 by the Institute for the Study of
Languages and Cultures of Asia and Africa (ILCAA), TOKYO
GAIKOKUGO DAIGAKU (Tokyo University of Foreign Studies)**

**Address: 51-21, 4-chome, Nishigahara, Kita-ku, Tokyo, Japan
Tel.: 910-0613, 919-6111**

Cable Address: GENGOBUNKAKEN TOKYO